

PEET BROS. COMPANY, INC.



ULTIMETER[®] Weather Instruments

The best in *affordable* weather technology.

"Keep a weather eye on Peet Bros."



The Weather Picture™, our popular accessory display you can read from across the room. (Expanded standard size shown above; see pg. 7 for complete details.)

Greetings!

Thank you for your interest in our exciting line of ULTIMETER Weather Stations, that so many users are finding invaluable in their homes and businesses.

Forecasts from radio or TV stations 10 or 20 miles away often differ greatly from your local conditions. As your *on-site* weather monitor, a Peet Bros. system can alert you when a plunging barometer suggests an immediate, serious storm threat...when to secure vulnerable property from threatening wind conditions...when to curtail outdoor activity because of dangerously low wind chill readings—and much more.

And you won't have to settle for a pre-configured system that includes mediocre sensors you may not even need; you can choose from three outstanding ULTIMETER Weather Stations, and add your choice of the industry's best sensors to "customize" the weather station for your exact needs.

I believe you'll find this catalog includes just the right amount of technical information so you can make wise, informed decisions. However, should you have any questions, please call us toll-free at **1-800-USA-PEET**. Our knowledgeable staff will be glad to help you.

If at all possible, do plan to visit us online at <http://www.peetbros.com>. You'll find a wealth of information, including complete owner's manuals, and you'll be able to see and actually try an ULTIMETER Weather Station.

You can order with confidence—we've been outfitting people with precision weather instruments for over 25 years. We guarantee your satisfaction.

William J. Peet II

What makes the ULTIMETER

Every ULTIMETER system is superior to any other in its price range. Some of our systems accept more sensor options than others, *but the sensors employed in all our systems are identical*. And all key design elements are the same, so every ULTIMETER system is easier to install, easier to use, more accurate, and will provide more data than similarly priced competitors' systems.

Our keyboards do more

Our keyboards feature individual molded keys that look better, feel better and work better than cheaper, flat "membrane" keypads. But the powerful microprocessor inside is the real "key" to solving a troubling problem and much more.

Here's the problem: Often you may wish to save the extreme readings from a big storm to show colleagues and friends days or weeks later. Other weather stations can save those extremes, but they cannot concurrently show you important daily highs and lows. That's because *other weather stations can only store one high and low value for each sensor*.

Here's the ULTIMETER Solution: Our systems employ three separate banks of high/low memory. *Without using a computer*, you can easily check: •All of today's and yesterday's highs, lows and daily rainfall •All the long term highs, lows and the cumulative rainfall since each was last reset •The time and date each high and low occurred. And you can reset each long term high and low individually or simultaneously, using a handy master reset.

They provide accurate wind gust readings. It's relatively easy to measure the speed of a *steady* wind, much harder to capture high wind gusts accurately. Other systems may report errors as large as 30%, because their less capable processors only measure short-term average wind speed, missing peak gusts. But our weather stations, like the most expensive commercial systems, calculate wind speed without averaging, thus capturing high wind gusts with pinpoint accuracy.

They warn of possible local flooding. You can depend on our *exclusive "Flash Flood Alert"* to give you the earliest reliable warning of potential local flooding when there is sustained heavy rain. Just add Peet Bros.' remarkable "PRO" or other fine rain gauges shown on page 6.

Their unique 3-mode serial data output supports: • The Weather Picture • Weather Buffer • Weather Modem • WeatherVox • Great software for data logging, point-to-point remote collection, Internet reporting and special system needs.

They're easy to power – at home or away. All ULTIMETER systems will operate from a 12-volt ac adapter (included), an automotive or other 12-volt electrical system or an internal 9-volt backup battery (not included).

Easiest to install and easiest to use

Just place our patented wind sensor over the top of a TV or FM antenna mast, rotate it until the reference mark points north, and pull

systems superior?

down the clamping ring. With no tools required and nothing to corrode, the wind sensor is easily detachable. It's equally easy to view its data: for current wind speed, simply tap the key showing the anemometer icon. Then just tap the UP arrow for today's highest wind, the time it occurred, and today's date. Tap it again to see yesterday's data, and once more for the long-term data.

The most reliable, accurate sensors

The quality of the data you receive can only be as high as the quality of the sensors in your system. *That's why Peet Bros. pays a premium to bring you absolutely the best sensors available.*

The Best Wind Sensor

Unlike conventional wind sensors, our patented digital design has no potentiometer or other friction contacts to wear out. It features bearings that are virtually corrosion proof, with self-lubricating Delrin[®] races and surgical steel balls. The precision-molded housing of UV-resistant Lexan[®] will resist the harshest elements for many years. Electrical connections are cold-welded, not soldered, for long-term reliability. Our exclusive *heated wind sensor option* minimizes the chance of a "lock up" in freezing rain conditions.

The Best Temperature Sensors

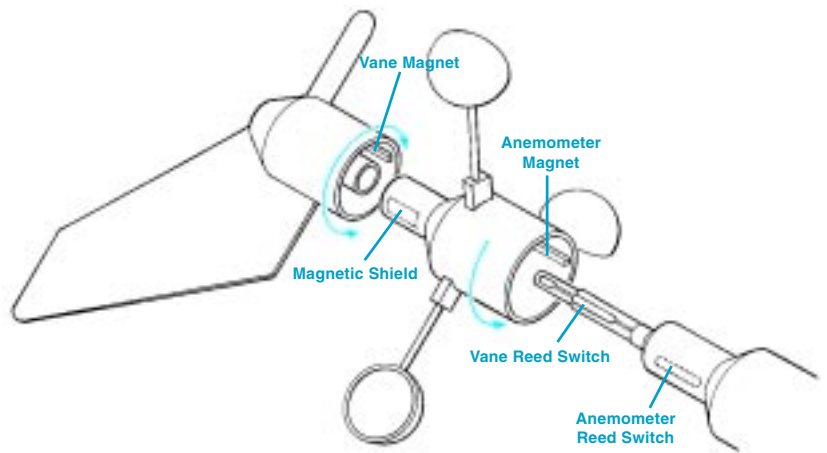
ULTIMETER temperature sensors are interchangeable, aged, precision thermistors. While other manufacturers encourage users to recalibrate temperature readings because their sensors aren't interchangeable or completely stable, our systems don't require adjusting—yet maintain an accuracy of 0.5° F—two to four times better than others!

The Best Rain Sensors (optional)

As you'll see on page 6, Peet Bros. offers a choice of superior rain gauges—from our self-emptying "PRO" with no moving parts and an optional heater, to our proven tipping bucket rain gauge.

The Best Pressure Sensor (ULTIMETER 2100 only)

Unlike other systems that only indicate a 1 hr. "trend arrow," our precision laser-calibrated sensor is so stable and accurate that we can display the *numeric value of pressure change over a full 3-hour period per National Weather Service standards.*



How our superbly reliable wind sensor works: A reed switch is a long-lived, hermetically sealed switch that actuates when a magnet is brought near it. The anemometer reed switch is normally open, whereas the centered vane reed switch is normally held closed by the strong vane magnet, regardless of wind direction. During each revolution of the cups:

- The anemometer reed switch closes briefly as the anemometer magnet approaches, then reopens when the anemometer magnet has passed. This actuation always occurs at the same angular position of the cups.
- The vane reed switch opens briefly, then closes again as the magnetic shield passes between it and the vane magnet, absorbing the magnetic field. The timing of the vane reed switch is determined by the angular position of the vane magnet, which is in turn determined by wind direction.

Wind direction is calculated (with a resolution of 1.4 degrees) by comparing the relative timing between operation of the two reed switches.

The Best Humidity Sensor (optional on 2100 and 800)

Our optional humidity sensor is a precision humidity-sensitive, polymer capacitor that has a wider sensing range than the resistive sensor that others use, so you get accurate readings, even at the all-important extremes—from 0 to 100% R.H.

Why Use Cabled Sensors?

A number of consumer-grade weather stations now use wireless sensors, promising faster installation. Why doesn't Peet Bros.?

It's because we and our customers have found that there is no substitute for the reliability and performance of cabled sensors. Although the price of our systems represents great value for everyone, we remain committed to meeting the needs of serious amateur and professional weather observers, who demand dependability and low maintenance. Professional or not, few people are likely to be really pleased with a weather station that interferes with television reception... or requires periodic replacement of back-up batteries in hard-to-reach outdoor sensors... or fails to work when the sun is blocked by prolonged periods of harsh weather or by ice and snow on the solar cells themselves. As one experienced weather observer put it, "The bitterness of intermittent data loss from wireless sensors remains long after the sweetness of faster installation is forgotten."

Now, configure a system for your present and future needs

With Peet Bros. you can configure an ULTIMETER system to meet your present needs and budget without locking yourself in. Our expansion and trade-up options let you modify your system economically whenever you wish. At each step along the way, you'll enjoy knowing that your system is the very best.



Basic components of all ULTIMETER Weather Stations include: keyboard/display unit with desk stand, wind sensor, outdoor temperature sensor, plug-in cables, AC adapter, cable ties, installation and operation manual. You can add enhancements from a wide array of optional sensors and accessories, configuring a system to meet your exact needs and budget.

ULTIMETER WEATHER STATIONS

ULTIMETER 2100

Our top-of-the-line ULTIMETER 2100 system gives you all the other advantages outlined on pages 2 and 3, plus a superb precision barometer with:

- a *preset storm alert* to warn you if the pressure falls more than 0.18" in 3 hours.
- the all-important *numeric 3 hour pressure change*, in accordance with National Weather Service standards.
- *today's and yesterday's highest and lowest pressure readings plus interesting extremes from days or weeks before, all with time and date of occurrence.*



- an *adjustable pressure change alarm plus adjustable alarms for both high and low pressure.*
- *Readings in inches or millimeters of mercury, millibars or hecto-Pascals.*

The table below summarizes capabilities of this and our other outstanding systems:

ULTIMETER SYSTEM FUNCTIONS AND SPECIFICATIONS

FUNCTION	MODEL 2000	MODEL 800	MODEL 100	SPECIFICATIONS & NOTES
Wind Speed	YES	YES	YES	± 3mph @ 170mph ± 5kmph @ 274 kmph ± 2m/s @ 76 m/s ± 3 knots @ 148 knots with 40 ft. cable*
Wind Direction	YES	YES	YES	16 point analog compass rose; Serial data resolution: 1.4°F
Wind Chill	YES	YES	YES	-150° to +98° F -101° to +37° C
Humidity - Outdoor	OPTION	OPTION	NO	0 to 100% ± 5% with 40 ft. cable*
Dew Point	WITH ABOVE	WITH ABOVE	NO	Same Units as Temperature
Humidity - Indoor	OPTION	OPTION	NO	Same as Outdoor Humidity with 15 ft. cable*
Temperature - Outdoor	YES	YES	YES	-55° to +150° F -48° to +66° C Accuracy: ±0.5° F Resolution: 1° F or C on display 0.1° F in serial data with 25 ft. cable*
Temperature - Indoor	YES	YES	OPTION	As above, however the keyboard itself should not be exposed to extremes. A remote "indoor" sensor option is available.
Pressure	YES	NO	NO	27.5 to 31.5 inHg 931.3 to 1067.0 hPa/mbar 698.5 to 800.0 mmHg
Rain	OPTION	OPTION	OPTION	Units: inches, millimeters
Build-in Static Protection	YES	YES	OPTION	Protective components in junction box run incidental static electricity to ground through 3 prong, ac adapter.
Electrical Alarm Signal	OPTION	NO	NO	+5 volts, on for 1 minute.
Serial Data Output	YES	YES	YES	
Illuminated Keys	YES	NO	NO	
Bright Blue LCD Backlight	YES	NO	NO	

* We'll gladly supply custom cable lengths quickly and economically.

ULTIMETER WEATHER STATIONS

ULTIMETER 800

The Model 800 is an ideal gift for a special occasion - even for yourself. It includes all the outstanding features outlined on pages 2 and 3, tracks more than 90 weather values, and will provide the same data as our top-of-the-line System 2100, except for barometric pressure. And if you later find you need pressure readings, you can trade up your 800 keyboard for a 2100 keyboard and continue to use all your existing sensors. We invite you to consider the Model 800. You'll find it combines:

- A very attractive price—it will fit your budget.
- Superb performance—you'll be proud of it.
- Unparalleled expansion capability - you won't outgrow it.



ULTIMETER 100

Perhaps you just need a very basic weather station – wind speed, wind direction, outdoor temperature and possibly rainfall. Even so, you have every right to expect that your system will be just as reliable and accurate as the most elaborate top-of-the-line system. Rest assured that our ULTIMETER 100 uses the same top quality sensors and the same great data processing as our renowned 2100 system. It is unsurpassed at what it does - and you're not paying for capability you don't need.



“I have a comprehensive ULTIMETER 2000 system, including the Weather Picture, which I use in the Bahamas. We were in our house on Man O' War Cay, Abaco, when Hurricane Floyd hit with winds registering 134 mph. Watching the barometer sink and rise as the eye passed over us was quite an experience! I love your whole system, and have become the local “honesty” weather reporter.”

—J.P., Abaco, Bahamas

Our promise for the future:

We'll enhance your system, not obsolete it.

A top priority of our aggressive product development program has always been to maintain maximum compatibility with previous products. If you've ever bought an expensive camera or stereo system only to find that it's become obsolete a year or so later, you'll appreciate this pledge of support to both our old and new customers.

For example Some years ago our supplier unexpectedly discontinued the computer chip used in our tried-and-true ULTIMETER Model II. Adversity sometimes breeds welcome innovations: forced to stop producing the Model II, we introduced our current, more capable family of systems.

But we didn't forget our thousands of ULTIMETER II owners. We designed the new systems to be compatible with existing sensors, then made an extremely attractive

keyboard upgrade offer to those owners. We invested a good deal of time and money designing The Weather Picture to also work with the ULTIMETER II, and we offered existing customers an unbeatable introductory price. We are still continuing to develop and improve the software which is compatible with all models, past and current.

Even our exciting new Wireless Weather Display components are designed to operate with most installed systems, enhancing their value rather than obsoleting them.

Ask any ULTIMETER owner. You'll most likely hear that Peet Bros.' commitment to customer support is absolutely the best possible—not only in technical service, but in the more subtle ways that will make your ULTIMETER Weather Station an exceptionally sound long term investment.

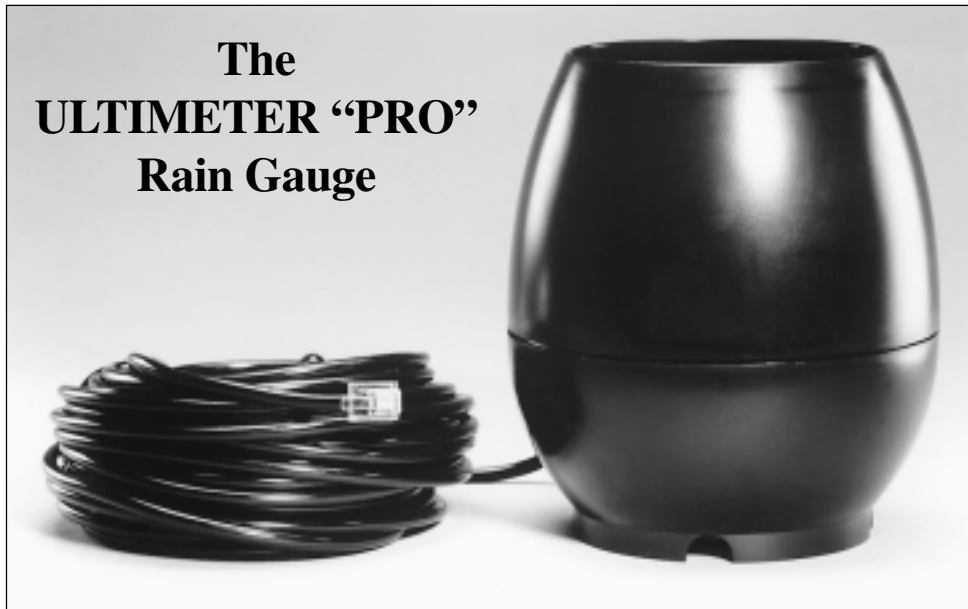
“Just want to inform you that the ULTIMETER 2000 system performed perfectly during Hurricane Debby. When daylight arrived, I raised my HAM antenna, fired up the computer and brought up the charts that the ULTIMETER 2000 had compiled while I was down. It pinpointed the exact time of the

wind shift, wind speed changes, and the low barometric pressure. This info I was able to forward in a timely manner by radio to the National Hurricane Center via W4EHW. I think it is great stuff!”

—B.H., St. Eustasius, Netherlands Antilles

OPTIONAL SENSORS AND ACCESSORIES

The ULTIMETER “PRO” Rain Gauge



Universal Mounting Bracket (Optional)

Extruded aluminum mounting bracket makes it easy to mount and level the “PRO” Rain Gauge. Can be screwed into a horizontal, vertical or sloped wooden surface or clamped to a 1.25" pipe. Includes mounting screws, U-bolt, washers and nuts.



Peet Bros.’ remarkable “PRO” rain gauge is self-emptying, yet it has *no moving parts*. Whereas tipping bucket gauges lose accuracy as the rain rate increases, the “PRO” senses each 0.001" of rain and *accurately records rain rates of more than 10" per hour!* It has no calibration adjustments of any sort; the accuracy is molded in.

Accuracy of the “PRO” gauge starts at the collection funnel which has parabolic side walls, to trap wind driven rain. The rainwater passes into a precision drop forming tube, much like the intravenous feeding unit in a hospital, that creates precisely formed drops, each exactly 0.001" of rain.

Each drop falling from the tube splashes across four gold-plated sensing rods, then out the bottom of the gauge. The gauge counts each drop and reports every tenth drop (0.01 inch of rain) back to the ULTIMETER keyboard.

All self-emptying rain gauges need to be kept clean if



0.01" Tipping Bucket Rain Gauge (TB)

Proven tipping bucket gauge measures rain in 0.01" increments. Supplied with 40 ft. cable and mounting screws. Approx. size: 7.5"H x 8"Dia.

they are to work properly, and the “PRO” gauge is no exception. The difference is that the “PRO” is so easy to maintain. Other types of rain gauges must be cleaned “on site”, because the mechanism can’t be disassembled. With the “PRO”, you can remove the filter screen (or even the entire precision drop forming tube) in seconds, take it inside to clean it off, and reassemble the gauge, again in seconds – all with no tools. There’s never been a rain gauge like the “PRO”! Supplied with 40 ft. cable. Approx. size: 5.13"H x 4.5"Dia. (max).

Heated “PRO” Rain Gauge

As above, but with a built-in, thermostatically-controlled, 18 watt heater for winter operation. Heater power is supplied over a separate line from an included ac adapter (24-volt ac output, 1 amp).

“I would like to take this opportunity to express my complete satisfaction with your ULTIMETER Weather Station. The station was installed in my home at South Lake Tahoe, California, where severe Sierra Mountain weather takes its toll on everything. After over seven years of dependable use, the unit is still working perfectly. The components have been exposed to heavy mountain snows, winter temperatures below zero, and winds that have reached 95 mph. The ULTIMETER has more than met my expectations. The value is unsurpassed.”

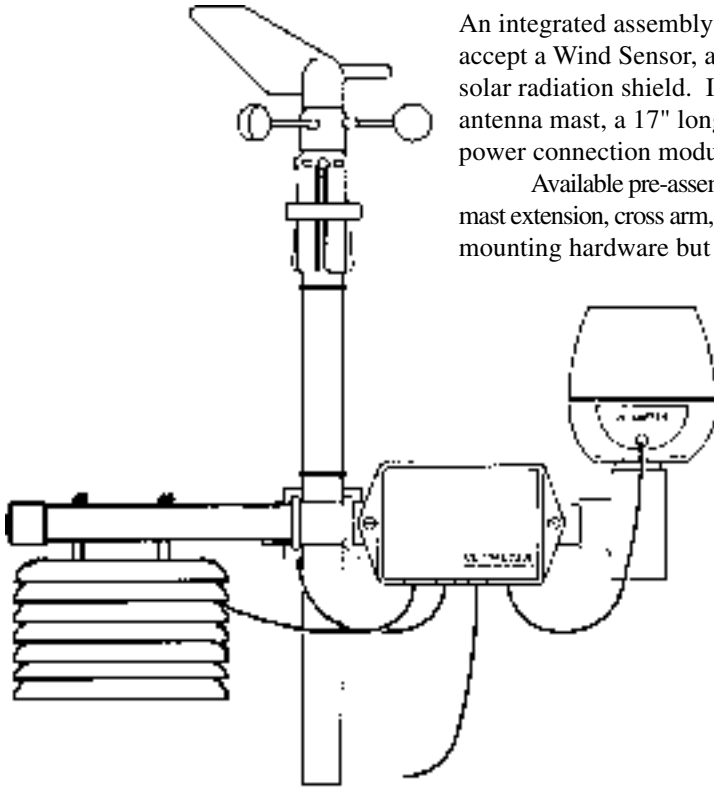
—B.H., South Lake Tahoe, CA

OPTIONAL SENSORS AND ACCESSORIES

ULTIMETER Unimount Sensor Array

An integrated assembly for mounting the outdoor sensors of an ULTIMETER System. Can accept a Wind Sensor, a "PRO" or TB Rain Gauge, and a Humidity/Temperature Sensor in its solar radiation shield. Includes: 20" high vertical mast that fits onto the top of a 1-1/4" Dia. antenna mast, a 17" long cross arm, weatherproof outdoor interconnection module, indoor power connection module and a 25 ft. 8-conductor cable to interconnect the two modules.

Available pre-assembled and pre-wired with all sensors, or as a kit that includes the 30" vertical mast extension, cross arm, weatherproof interconnection module, indoor power connection module and mounting hardware but without the sensors and 8-conductor interconnecting cable.



Outdoor Humidity/Temperature Sensor

(for ULTIMETER 2100 and 800 only-shown at right)

Our optional outdoor humidity/temperature sensor uses a precision polymer-based capacitor to provide accurate R.H. readings from 0 to 100%. Two large 2.25" ports, sealed with sintered plastic filters, let moist air pass freely, while keeping out insects and debris. Includes a temperature sensor to eliminate extra wiring. With 40 ft. cable. Approx. size: 6"L x 3"W x 1.75" D.

Shielded Outdoor Humidity/Temperature Sensor

Same electronic components and circuitry as above, mounted in a tiered, passive solar radiation shield that deflects direct and reflected solar radiation. A must for accurate readings when the sensor housing cannot otherwise be adequately shielded. Supplied fully assembled with 40 ft. cable and mounting bracket. Size 8" x 8" x 6".

Radiation Shield Only

Same radiation shield as described above, but without the Humidity/Temperature Sensor. May be used to shield a temperature sensor from direct and reflected solar radiation that would otherwise degrade its readings. 8" x 8" x 6".

Indoor Humidity Sensor

Same as Outdoor Humidity Sensor, except with 15 ft. cable and without temperature sensor. Mounts away from keyboard to give accurate readings where needed—in a solarium, the bedroom of a person with heart or respiratory problems, or in a room of valuable antiques, stamps or manuscripts.

Universal Extension Cable

Used to extend the data line of any sensor, The Weather Picture, Weather Modem, Weather Buffer, WWD Transmitter, WWD Receiver or Wireless Rain Gauge Receiver. 40 ft. long with modular plug on one end and modular receptacle on the other.

Single Cable Kit

A reliable alternative to wireless sensors, the Single Cable Kit reliably carries all sensor data on only one cable running from outdoor sensor junction box to indoor keyboard display unit. Includes weatherproof sensor connection box and 25' output cable for connection to indoor keyboard.

Duplex Data Cable

This 9 ft. 6-conductor cable lets you connect two devices to the serial data/indoor humidity port of an ULTIMETER keyboard.

Stainless Steel Temperature Probe

A 10" stainless temperature probe for measuring the temperature of soil or mildly caustic liquids. With 40 ft. cable.

RFI Filters

Radio transmissions normally will not affect an ULTIMETER Weather Station's performance. But if you were to encounter interference from a nearby high powered transmitter, our small plug-in 30 dB RF Filters should solve the problem. Available in 6 and 8-conductor models.



Outdoor Humidity/Temperature Sensor

THE WEATHER PICTURE



Now, put the weather on your wall!

At home or at work, our big, handsome WEATHER PICTURE lets you read the weather *from across the room*.

With its bright red numerals on a jet-black background, framed in solid oak or brushed aluminum, The Weather Picture is comfortably at home in any setting. This optional accessory display receives information from your ULTIMETER Weather Station and continuously shows all the vital weather data you have pre-selected – without your having to press a single key.

NO KEYS TO PRESS

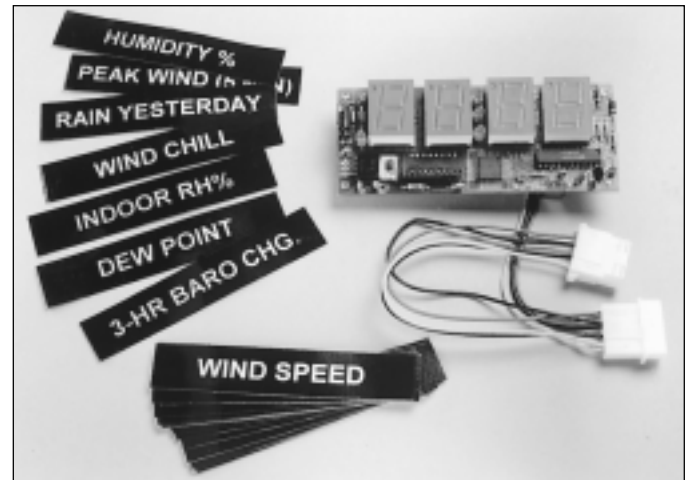
—**PERFECT FOR PRIVATE HOMES.** Even family members who shy from a digital watch will love The Weather Picture. One glance gives them all the data they want, without fail and without pressing any keys. Complete weather details are available at your ULTIMETER Weather Station keyboard—more than enough to please even the most dedicated weather buff.

The Weather Picture's 8 inch compass rose and large 0.8 inch *illuminated* red numerals are clearly visible day or night from virtually any position in the room. It's perfect for homes as well as schools, hotels, offices, country clubs, stores, marinas, corporate lobbies, ski lodges, municipal offices, emergency management rooms, etc.—any place you or others need up-to-the-second *local* weather data.

—**PERFECT FOR PUBLIC PLACES.** Install it and rest easy, even in a public building filled with curious children or adults unfamiliar with this remarkable weather display. Viewers can't accidentally change settings or delete historical data, because The Weather Picture has no adjustments or buttons to press. Yet on your ULTIMETER keyboard *you* can privately access every weather detail.

DESIGNED TO MEET YOUR PRESENT AND FUTURE NEEDS

The basic Weather Picture includes Wind Direction plus one Numeric Display Module (see photo). The Module can be set and labeled to show the exact data item and measurement units you desire. You can include additional Modules to display the data most important to you now, then add more later when you add a new sensor to your Weather Station or your display requirements change. You can even trade up from a standard size to the large Weather Picture.



SPECIFICATIONS

The Weather Picture requires serial data output from an ULTIMETER Weather Station - Model 2100, 800, 100, or older Model 500 or ULTIMETER II. Two sizes are available, in either a stylish brushed aluminum or handsome solid oak frame. Both sizes come with Wind Direction plus one Numeric Display Module.

STANDARD SIZE can house up to two additional Numeric Display Modules (total of three). In brushed aluminum frame, measures approx. 11.25"H x 10.25"W x 1.5"D. In solid oak: approx. 14.25"H x 13.25"W x 1.5"D.

Numeric Display Modules are all identical. Each includes a microprocessor, four LED digits, and 8 small switches (on reverse side) to select which weather value will be displayed. Matching label slips into a recessed holder.

LARGE SIZE can house up to six additional Numeric Display Modules (total of seven). In brushed aluminum frame, measures approx. 11.25"H x 15.25"W x 1.5"D. In solid oak: approx. 14.25"H x 18.25"W x 1.5"D.

Supplied with a 15 foot cable terminated with a power receptacle and

a male modular phone plug for data input. The data line may be extended more than 120 feet, as needed, using our 40-foot Universal Extension Cables. Includes complete kit of labels, ac adapter, and easy-to-read owner's manual.

NEW PROBLEM SOLVERS

Wireless Components Unleash Your Weather Displays!

Our **Wireless Weather Display (WWD)** components let you place The Weather Picture or an ULTIMETER keyboard display unit virtually anyplace in your home or office, with no connecting cables - within the transmitter range of 75 to 100 feet from your new or existing ULTIMETER 100, 500*, 800, or 2100 Weather Station keyboard.

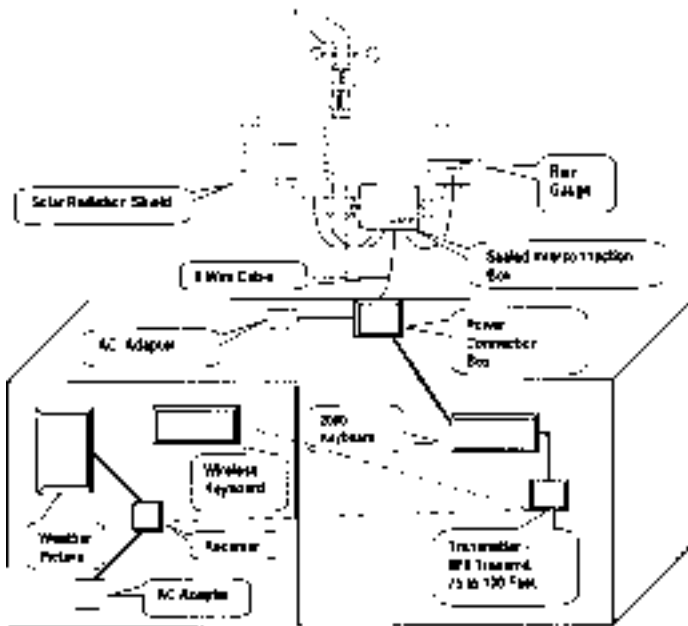
Merely install the system with its keyboard in any convenient indoor location, and plug the WWD Transmitter into it. Now you can enjoy a keyboard or wall display of weather in any room and even move them from time to time, without having to re-run cables back to the system keyboard. There are two Wireless Weather Display components:



Wireless Receiver —Looks just like an ULTIMETER 2100 keyboard/display unit but has a built-in receiver to receive the WWD Transmitter signals. Displays all data available on the original keyboard, including current values, highs and lows from today, yesterday and since last reset. All alarms can be set independently on the Wireless Receiver. Includes serial data output (complete-record mode) for Weather Picture or PC Data Logging. The Wireless Receiver is normally powered from an included power adapter but can be operated as a completely portable instrument, powered by a self-contained 9-volt backup battery for limited periods. Size 6.75”L x 2.75”H x 1.25”D.

“I just wanted to drop you a note to say how helpful your technical support line was. I am glad to have recommended your weather station and thus your company many times.”

—P.H., Lee Center, NY



“I have to say that it was a pleasure dealing with your people there. I am in the computer industry, and have to deal with tech support people every day. Most of them could take lessons from Peet Bros. Company. Thanks again for your good service.”

—J.S., Tarpon Springs, FL



WWD Transmitter —A small radio transmitter that plugs into the serial port on the side of an ULTIMETER Weather Station keyboard to send real-time weather data up to 100 feet to any number of WWD Keyboards and WWD Weather Pictures. The WWD Transmitter is powered directly from the ULTIMETER weather station keyboard. Size 4”L x 1.75”W x 7/8”H.

*Replaced by the more capable model 800, but still fully supported.

NEW PROBLEM SOLVERS

The Weather Modem

Now for the first time you can provide others with accurate 24-hour local weather data without disturbing your household. The Weather Modem has an exclusive *selective-answer capability* (patent pending), that uses Caller-ID data on your phone line.

The Modem can recognize up to three preset calling numbers, silently deliver weather data digitally and then hang up – while passing all other calls through to you as usual.

If you have Caller-ID service, you can volunteer weather data to the local TV station, National Weather Service office or area Emergency Management Headquarters, set the Modem to recognize their calls, then rest easy.

Using the Weather Modem's *single button auto-dial capability* and an ULTIMETER 2100 Keyboard *with no computers*, you can *collect weather data from a distant ULTIMETER Weather Station* at your office, vacation cabin,



ski lodge, marina, etc.

The Weather Modem comes complete with cables, a 115 volt ac to 9 volt ac adapter, set-up software and instructions. Approx. size: 4.88"W x 1.5"H x 5.0"D.

The Weather Modem has been approved for use in the United States and Canada. For use in other countries, please contact our Customer Service department by fax at (407) 892-8552 or e-mail at peetbros@peetbros.com.

The Weather Buffer



The new ULTIMETER Weather Buffer *can store more than a month's weather data at 5-minute intervals with your computer off*. Our compatible Data Logger/Viewer Software (WINULT) automatically downloads stored data with *no special commands from the operator*, then lets you view all historic and real time data.

The Weather Buffer includes an internal "data-guard" battery so you won't lose stored data during power outages. Although the Weather Buffer is normally powered from an included ac adapter, we include a cable you can connect to an external 12 volt battery (not included) to enable remote or

"Service is very important to me, and this is one of the reasons I picked the Peet weather system over some of the others out there, because of the quality service you offer."
—S.F., Bellefontaine, OH

ULTIMETER Solutions:

"How can I check the weather at my vacation cabin – without using a computer?"

Connect an ULTIMETER keyboard at your main residence to your Weather Modem and set it to dial your vacation cabin. Then, whenever you need to know the weather there, press the Auto-Dial button. Your remote Modem will answer and your local keyboard will show you the real-time weather information from your cabin. When you're finished looking at the current readings, press the Auto-Dial button again to hang up. Then check your local keyboard to see all the highest and lowest readings from the cabin – for today, and yesterday, plus the long term extreme values, just as if you were there!

emergency operation without ac power.

The Weather Buffer comes complete with data-guard battery, remote battery cable, data cables, 115/9 volt ac adapter and instructions. Approx. size: 4.88"W x 1.5"H x 5.0"D.

"I wish to express our thanks for Peet Bros. Company standing behind their product and fast service to our Public Safety Agency. It is great to do business with a company that backs their product and service."
—Emergency Mgmt Agency, Town of Southwick, MA

QUESTIONS?

SOFTWARE

WEATHER OUTLOOK Data Logger

This comprehensive Windows software package provides your choice of stunning graphic displays of current and historic data flowing from the serial output of an ULTIMETER Weather Station. A powerful (but user-friendly) 32-bit program, WEATHER OUTLOOK features broad weather display analysis and data acquisition capabilities. View, print or export weather data reports in tabular, graphic, and analog gauge form. Fully supports the ULTIMETER Weather Modem and Weather Buffer, and is compatible with Windows XP. You can customize the appearance and features of graphs and gauges in the display window as desired for optimum clarity, using the simple tabular window configuration with pop-up menus. With the addition of Add-Ons (sold separately), you can expand functions to include automatic Internet data posting and Severe Weather Warning Alarms. Requires 233 Mhz Pentium, 64MB RAM, 15 MB Hard Drive space, and Windows 95, 98, NT, 2000, or XP.



Value	Unit
34.0	F
35.0	F
17	mph
ENE	
29.93	inHg
48	F
0	%
48	%

Weather Alarm Add-on

This add-on companion to WEATHER OUTLOOK allows the user to set minimum or maximum weather measurements that will activate alarms (audible and visual PC desktop messages) when extreme weather conditions occur. Get maximum benefit from your ULTIMETER Weather Station with Weather Alarms!

Internet Weather Add-on

This add-on companion to WEATHER OUTLOOK enables you to add interesting local weather information to web sites. All values and graphics from WEATHER OUTLOOK can be displayed on any web site (including your own!). Can also be used to provide weather data to be shared directly on an Intranet (office network environment).



ULTIMETER WINULT Data Logger

This Windows program provides graphic displays of weather data flowing from the serial output of an ULTIMETER Weather Station. Supports the Weather Buffer (page 10), providing fully automatic storage and downloading of data and seamless “no commands” operation. The ULTIMETER WINULT Data Logger requires at least a 486/66 with a 3.5” floppy drive, 16 meg of RAM, and 800x600 small fonts with 2 meg video memory, running Windows 95, 98, ME or NT.

ULTIMETER WINNET Internet Add-on

Put your weather data on your web page! Creates HTML files which will automatically upload to your website at 1, 5, 15, or 30 minute intervals.

Also includes weather alarms package. Requires WINULT Data Logger.

Valuable Software *FREE*

A number of valuable program downloads are available free from the File Transfer Section of our Internet home page, www.peetbros.com. Current examples include:

- DAILY, a program that’s perfect for maintaining a daily weather log while you’re away on a business trip or vacation.
- CWTSR, a terminate-and-stay-ready DOS program that makes weather data available to other programs via a “ready to use” text file, updated every 5 minutes.
- SDECODE, a utility that continuously decodes and displays up to 10 selected fields from the serial data output of an ULTIMETER Weather Station .
- TESTPORT, a diagnostic tool to help you verify that a computer is correctly receiving serial data from an ULTIMETER keyboard without interference from IRQ conflicts or such.

Great Software to Meet Every Need

Because ULTIMETER Weather Stations are so well respected and widely used, a great many commercial programs, shareware, and free programs have been written for them. There's an economical program available to meet almost any need.

For example: • checking the weather at your vacation cabin • automatically gathering weather data from several sites for your TV station • evaluating a potential wind power site • linking your school to a weather network • periodically posting local weather data to your home page.

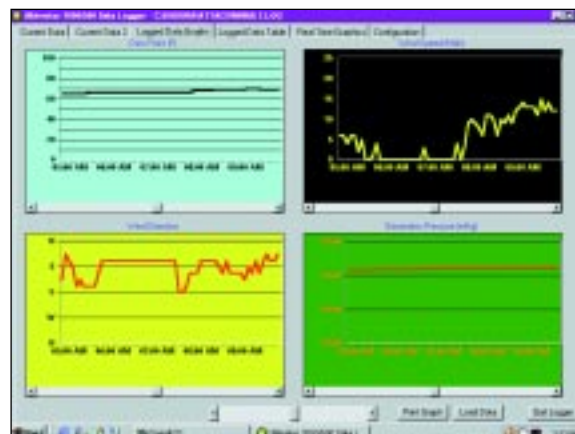
Peet Bros.' own programs are described below and on the preceding page. Our comprehensive web site at <http://www.peetbros.com> provides further details and lists many programs available from outside developers.



One of the attractive screen displays of current data available in our WINULT DATA LOGGER program.

Date	Time	Wind Speed	Wind Dir	Temp	Humidity	Barometer	Wind Chill
12-12-01	12:00	10	135	32	41	30.08	28
12-12-01	12:05	10	135	32	41	30.08	28
12-12-01	12:10	10	135	32	41	30.08	28
12-12-01	12:15	10	135	32	41	30.08	28
12-12-01	12:20	10	135	32	41	30.08	28
12-12-01	12:25	10	135	32	41	30.08	28
12-12-01	12:30	10	135	32	41	30.08	28
12-12-01	12:35	10	135	32	41	30.08	28
12-12-01	12:40	10	135	32	41	30.08	28
12-12-01	12:45	10	135	32	41	30.08	28
12-12-01	12:50	10	135	32	41	30.08	28
12-12-01	12:55	10	135	32	41	30.08	28
12-12-01	13:00	10	135	32	41	30.08	28
12-12-01	13:05	10	135	32	41	30.08	28
12-12-01	13:10	10	135	32	41	30.08	28
12-12-01	13:15	10	135	32	41	30.08	28
12-12-01	13:20	10	135	32	41	30.08	28
12-12-01	13:25	10	135	32	41	30.08	28
12-12-01	13:30	10	135	32	41	30.08	28
12-12-01	13:35	10	135	32	41	30.08	28
12-12-01	13:40	10	135	32	41	30.08	28
12-12-01	13:45	10	135	32	41	30.08	28
12-12-01	13:50	10	135	32	41	30.08	28
12-12-01	13:55	10	135	32	41	30.08	28
12-12-01	14:00	10	135	32	41	30.08	28

Screenshot view of logged weather data taken at five-minute intervals using WEATHER OUTLOOK software.



Historic data is easily called up and graphed in our WINULT DATA LOGGER program.



Uncle Sam Wants You!

Amateur radio station W4EHW at the National Hurricane Center in Miami urgently needs to expand its network of weather observers. You don't need to be a radio amateur to participate in this valuable public service activity, but you do need to be able to provide quantitative wind gust data that they can rely on to be accurate. That's why they'd like ULTIMETER owners to volunteer and why they have asked us to include this message.

If your ULTIMETER Weather Station is located within 50 miles of the Gulf or Atlantic Coasts, they and we urge you to volunteer as a weather observer. There is no cost or obligation. You may register with W4EHW by e-mail (w4ehw@fiu.edu), including your name, address, telephone and FAX number, and your e-mail address.

Peet Bros. Company
 31 E. 17th Street, St. Cloud FL 34769
Toll Free: 1-800-USA PEET
 FAX: (407) 892-8552 E-mail: peetbros@peetbros.com

©2002 Peet Bros.