

SpecMaps™ Web Mapping Utility



SpecMaps™

Make management decisions based on your field's spatial variability!



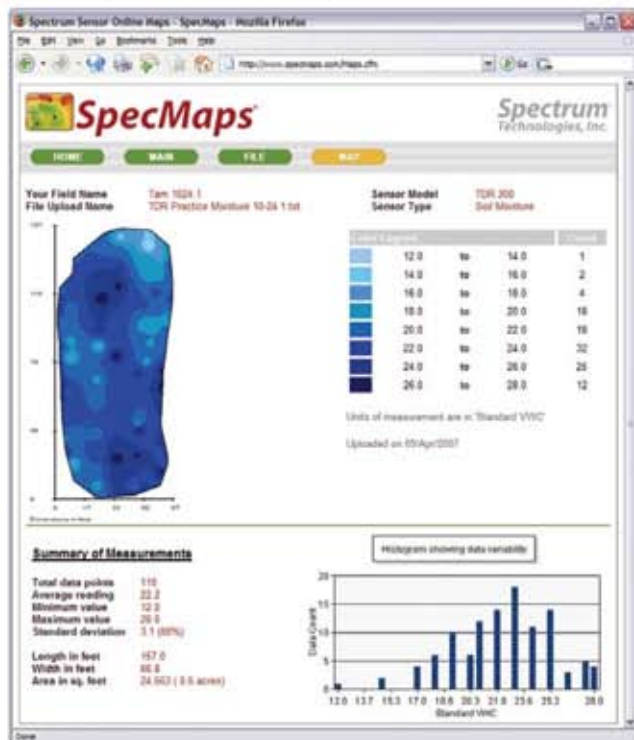
Field Scout TDR 300

Whether you're growing grains or grass, fruit or fiber, water is essential to the health of your crop. The cost of water, and the cost of energy to supply it to the field, continues to escalate. It's important to know when, where and how much water to apply whenever you irrigate. Soil moisture sensors buried in the field address when and how much water to apply. But, they cannot give information on the variability of soil moisture across the field. The spatial distribution efficiency of a sprinkler system can be checked for uniformity by means of surface collection vessels. However, this does not indicate how the moisture distributes itself in the soil (or, indeed, if it infiltrates at all).

The Field Scout® TDR 300 Soil Moisture Meter gives you the flexibility to measure the soil moisture content anywhere in the field. It also features an internal logger that, when connected to a user-supplied GPS receiver, can create geo-referenced data that can be readily imported into spatial mapping software.

SpecMaps™ is a web-based software program that provides a simple tool for turning your TDR 300 measurements into a 2-dimensional color map of soil moisture variability. The location and relative magnitude of wet and dry spots becomes immediately apparent. Additionally, SpecMaps displays some basic statistical information about your field or golf green, including a histogram for another quick assessment of how uniformly moisture is distributed across the field.

SpecMaps adds value to your TDR 300 meter data, allowing for better-informed irrigation decisions.



- Item 3652 SpecMaps Web Mapping Utility (1-Year Subscription)
Item 6430FS Field Scout TDR 300 Soil Moisture Probe
Rods (pair) : Available sizes - 7.5cm (3in), 12cm (4.8in) & 20cm (8in)
Item 2950CV5 GPS/DGPS Cable

Spectrum™
Technologies, Inc.

"To Measure Is To Know"

12360 South Industrial Drive, East
Plainfield, Illinois 60585

Toll Free: (800) 248-8873 • Phone: (815) 436-4440

Fax: (815) 436-4460 • E-mail: info@specmeters.com

SpecMaps™ Web Mapping Utility

SpecMaps

Make management decisions based on your field's spatial variability!



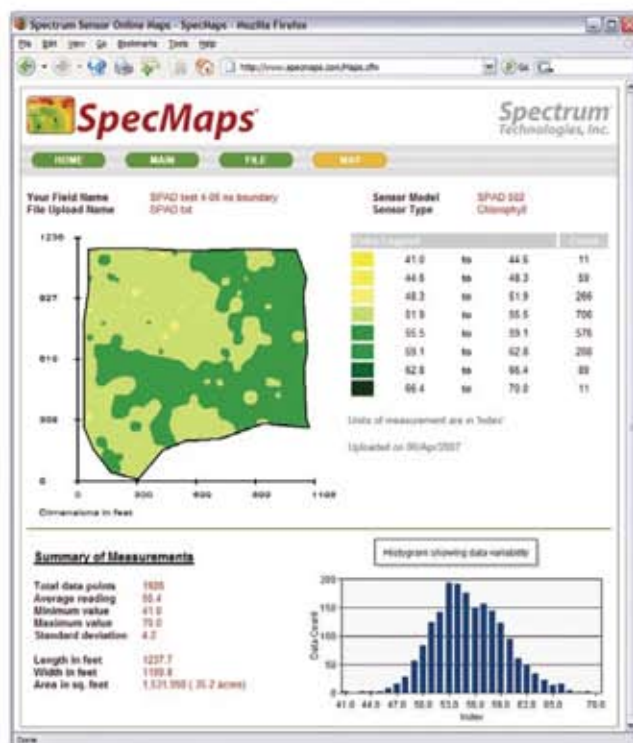
SPAD 502DL Chlorophyll Meter

Nitrogen is one of the key nutrients for your crop. The level of nitrogen in the soil, however, can vary dramatically through the growing season and by soil type. Plant uptake and/or losses from leaching or environmental breakdown can lead to deficiencies which compromise a plant's health or yield potential.

Often, the rate of nitrogen loss varies across the field. Differences in topography, soil type and crop stand can lead a field to have sufficient supply in some areas and be deficient in others. One early sign that a plant is nitrogen-deficient is a yellowing of the leaves. This is called chlorosis. The SPAD 502DL Chlorophyll Meter was designed to identify chlorosis before it can be detected with the naked eye. Spectrum Technologies has modified this powerful meter to include a data logger that, when connected to a user-supplied GPS receiver, can create geo-referenced data that can be readily imported into spatial mapping software.

SpecMaps™ is a web-based software program that provides a simple tool for turning your SPAD measurements into a 2-dimensional color map of crop chlorophyll content. The location and relative magnitude of nitrogen-stressed parts of the field becomes immediately apparent. Additionally, SpecMaps displays some basic statistical information about your field, including a histogram for another quick assessment of how chlorosis is distributed across the field.

SpecMaps adds value to your SPAD data, allowing for better-informed fertilizer application decisions.



- | | |
|---------------|---|
| Item 3652 | SpecMaps Web Mapping Utility (1-Year Subscription) |
| Item 2900DL | SPAD 502DL with Datalogger |
| Item 2950CV5 | GPS/DGPS Cable |
| Item 2900DLUP | Upgrade for standard SPAD 502 (includes data logger, data port, & software) |

Spectrum
Technologies, Inc.

"To Measure Is To Know"

12360 South Industrial Drive, East
Plainfield, Illinois 60585

Toll Free: (800) 248-8873 • Phone: (815) 436-4440

Fax: (815) 436-4460 • E-mail: info@specmeters.com