

# UNDERSTAND YOUR HOME ENERGY CONSUMPTION AND SOLAR GENERATION LIKE NEVER BEFORE

The **engage solar kit** lets you manage multiple circuits in your home from anywhere, any time through the engage online portal.

This kit is perfect for monitoring your solar generation and comparing it to your energy consumption info. Instantly see the cost of using energy in your home (updates every 10s).

## HOW IT WORKS

Our **engage solar kit** is simple to install and use. One CT sensor is clipped onto the live feed cable at your breaker panel and another on the cable coming from the solar inverter. These sensors are then connected to the efergy transmitters. The transmitters wirelessly send real time data to the hub. The engage hub is connected to your internet router via ethernet cable.

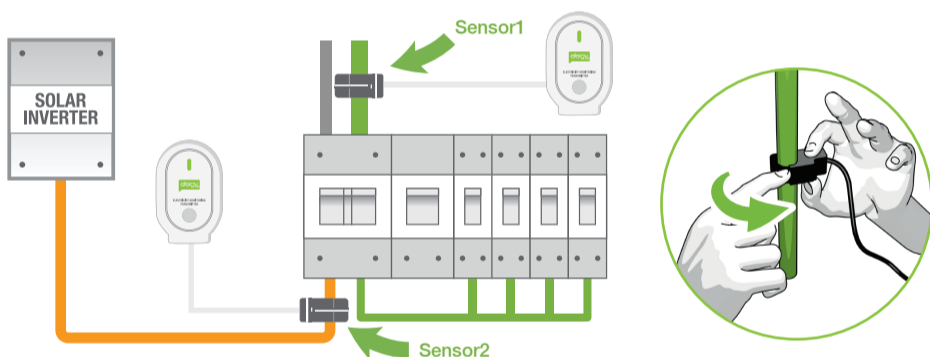


## 1. CHOOSE SENSOR TYPE

### a) CT sensor

To measure household consumption connect the Mini CT sensor to the feed cable (see Sensor1 on the diagram below). If your electricity panel differs to the one shown here please contact us at [info.aus@efergy.com](mailto:info.aus@efergy.com)

If you want to measure solar generation connect the Mini CT sensor to the cable coming from the solar inverter (see Sensor2 on the diagram below).

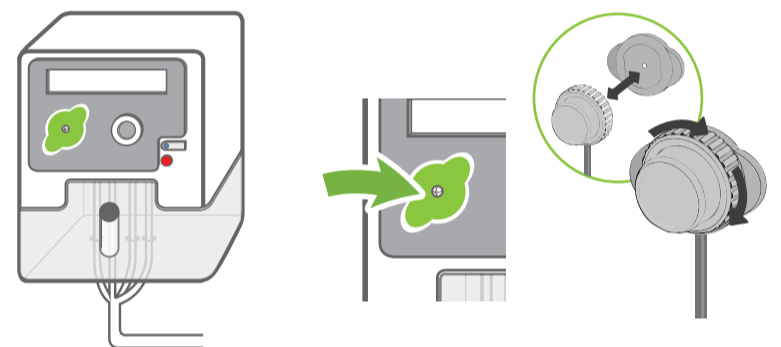


To connect the CT sensor pull the clasp to open it, place the sensor around the feed cable and push the clasp to shut. Insert the sensor jack in to the base of the transmitter.

EFERGY RECOMMENDS THAT INSTALLATION IS CARRIED OUT BY A QUALIFIED ELECTRICIAN

### b) Typical IR/ Optical Sensor Installation (DIY)

Meters generally have an output port located on the front panel. The output port will have digits in imp/kWh mentioned below it. e.g. 1000 imp/kWh.



Unscrew the sensor body from the sensor base. Peel off the adhesive on the base of the sensor and position the sensor base hole over the flashing LED

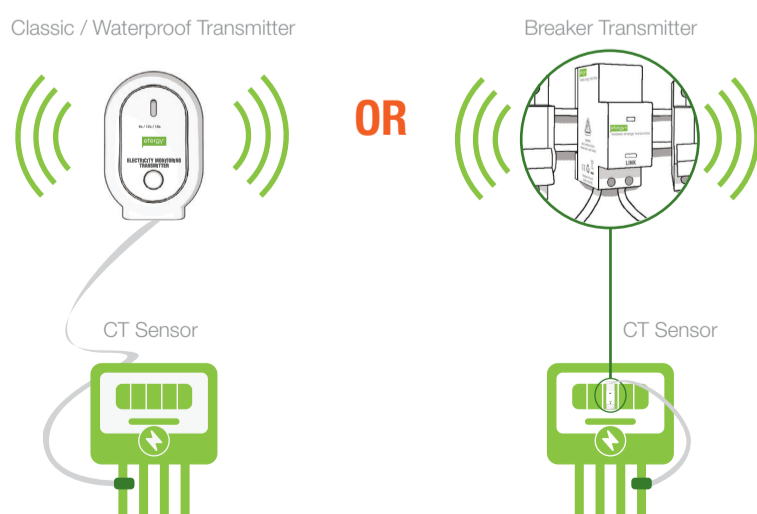
Re-attach the sensor body to the sensor base and screw firmly in place. Insert the jack on the end of the sensor wire into input socket on the transmitter. The transmitter will send the information wirelessly to the display.

Note: The **engage solar kit** is packaged with 2 Mini CT sensors. If you require TPM AC / AC Sensor or IR / Optical sensors, please visit our website at [www.efergy.com](http://www.efergy.com) to purchase.

EFERGY RECOMMENDS THAT INSTALLATION IS CARRIED OUT BY A QUALIFIED ELECTRICIAN

## 2. CHOOSE TRANSMITTER TYPE

The **engage solar kit** is packaged with either a standard efergy transmitter or a waterproof transmitter. If you require TPM or IR/Optical transmitters, please visit our website at [www.efergy.com](http://www.efergy.com) to purchase.



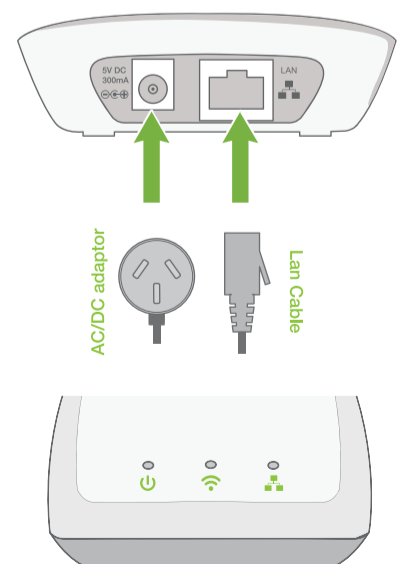
## 3. CONNECT THE ENGAGE HUB

a) Plug the engage hub into a mains power source using the supplied AC adaptor, and into a spare port on a router with internet access using the LAN cable provided.

b) There are 3 lights on the top of the hub. First, the red light will light continuously, showing that the hub is powered on. The yellow light (centre) will come on next, indicating that the hub is looking for a transmitter within range. A green light states that a working internet connection has been connected to the hub.

c) Within a minute or two you should see both the yellow light and green light come on and stay on solid for a few seconds and then go out. The lights may or may not illuminate at the same time. Once you see the yellow and green lights come on for a few seconds and then go out, you are ready to register your engage hub.

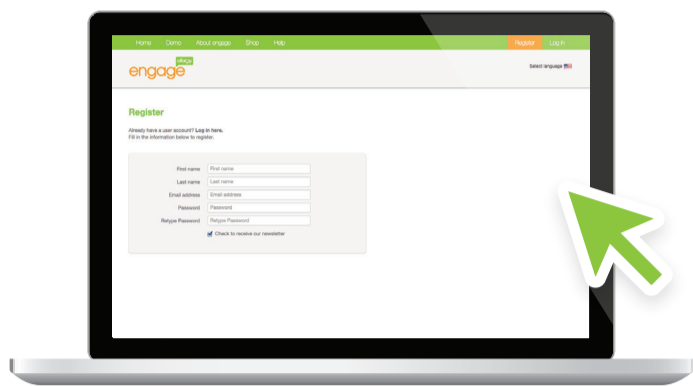
Note: If your router does not recognize your new hub, the router may need to be reset. Simply do this by pushing the reset button on the router itself (sometimes this requires the use of a paper clip).



## SET UP THE ONLINE SERVICE

Visit <http://engage.efergy.com>, register and follow our step by step setup process on-screen. It may be more comfortable for you to carry out this process on a laptop near where the transmitter is installed or get someone to assist you during the pairing process.

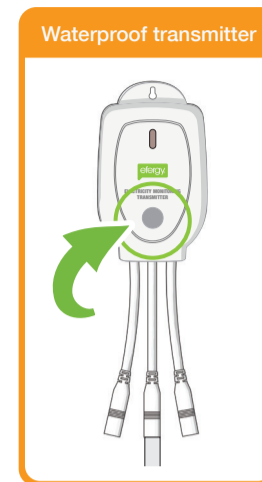
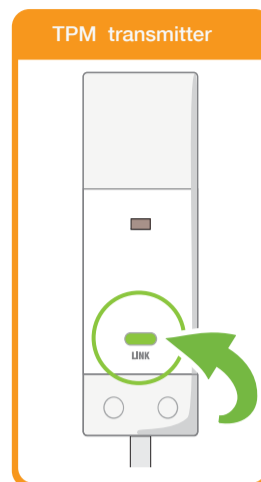
To register your device you will need to input your MAC address and serial number which can be found on the underside of your engage hub.



<http://engage.efergy.com>

## LINK THE TRANSMITTER

When prompted by the on-screen instructions, complete installation by pressing Link button on the website and on your transmitter. This must be done within 30 seconds of each other. You may press the link button on the transmitter several times during this time. Do not press and hold this button, simply push and release it each time for period.



## WHAT'S IN THE BOX



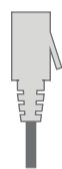
1x engage hub



2 x Mini CT



2 x Waterproof Transmitters



1x LAN Cable



AC/DC Adaptor

## TECHNICAL INFORMATION

Model Name	engage hub kit 2.0
Model Number	HH-2.0
Frequency	433.5MHz
Transmission Time	10 Sec.
Transmission Range	40 - 70m
Engage Hub Power	AC/DC Adaptor



## ASK US

If you have any problems at any point during registration please check the FAQs within the Help section at:

<http://engage.efergy.com/content/getting-started>

Alternatively, if you have any questions about using your installation guide or want further information on saving energy, you can contact us or visit our website.

 +613 939 995 56 / [info.au@efergy.com](mailto:info.au@efergy.com)

 +64 21 724 382 / [info@efergynz.co.nz](mailto:info@efergynz.co.nz)

[www.efergy.com](http://www.efergy.com)

Our goods come with guarantees that cannot be excluded under the Australian Consumer Law. You are entitled to a replacement or refund for a major failure and for compensation for any other reasonably foreseeable loss or damage. You are also entitled to have the goods repaired or replaced if the goods fail to be of acceptable quality and the failure does not amount to a major failure.

Note: For 120/240V residential services, please set the voltage set-point to 120V



efergy®

**MONITOR YOUR HOME ENERGY CONSUMPTION & SOLAR GENERATION FROM ANYWHERE**



efergy®  
**engage solar**

efergy®



**QUICK START GUIDE**

