

EasyWeatherIP PC Software User Manual

1.0 General Information

This Weather Station is a high quality, easy to use weather monitoring system that reads, displays and records the weather data from internal as well as external sensors. Besides the internally measured values for indoor temperature, indoor humidity and air pressure the outdoor sensor will take data for temperature and humidity, wind and rainfall. Operation of these units is by wireless transmission to the Base Station.

After installing the “EasyWeatherIP” program on this CD-ROM, your PC can display all indoor data as well as the weather data from the Base Station received from the external sensors. For operation, simply use the USB cable supplied and connect the Base Station to the PC. From now on you can start to track current and history weather information at your finger tips.

Note: the CD is not provided, you can ask the seller to get or purchase this software CD

2.0 System Requirements

To install the "EasyWeatherIP" software onto your PC, the minimum requirements are as follows:

Operating System: Windows NT4 (Service Pack >= 6a), Windows 2000, Windows XP, Windows Vista, Windows 7, Windows 8, MAC OS

CD-ROM Drive

Base Station and PC must be connected by USB cable

3.0 Installation of the “EasyWeatherIP” Software

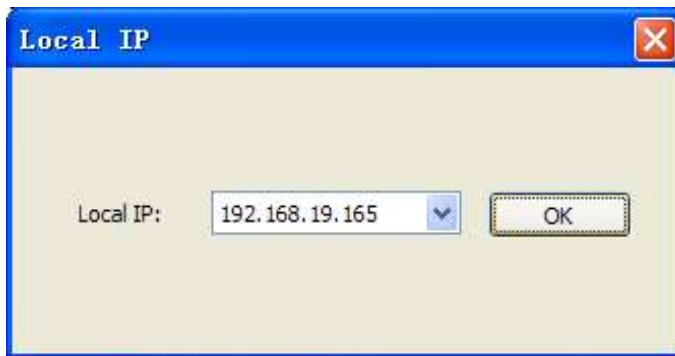
Firstly, the Base Station and the Outdoor Sensors should be connected and checked for correct function (see **Operation Manual for HP2000** for setting up the Weather Station). After successful checking, install the “EasyWeatherIP” software as follows:

1. Switch on your PC and insert the CD-ROM into the CD-ROM Drive.
2. Double click “EasyweatherIP Setup.exe”
3. Select the installation process language option and click ok
4. click next and select the destination folder(change directory when needed)
5. click next and select the shortcut folder(change directory when needed)
6. click next and select the additional tasks.
7. Click next and setup is now ready to begin installing EasyweatherIP on your computer.
8. Click install, software will be installed automatically
9. Press Finish to finish the installation process and exit. If you tick “Launch Easyweather” the software will start to run.
10. From “Start—All Programs—EasyWeatherIP” path and double click the “EasyWeatherIP” icon to start application.

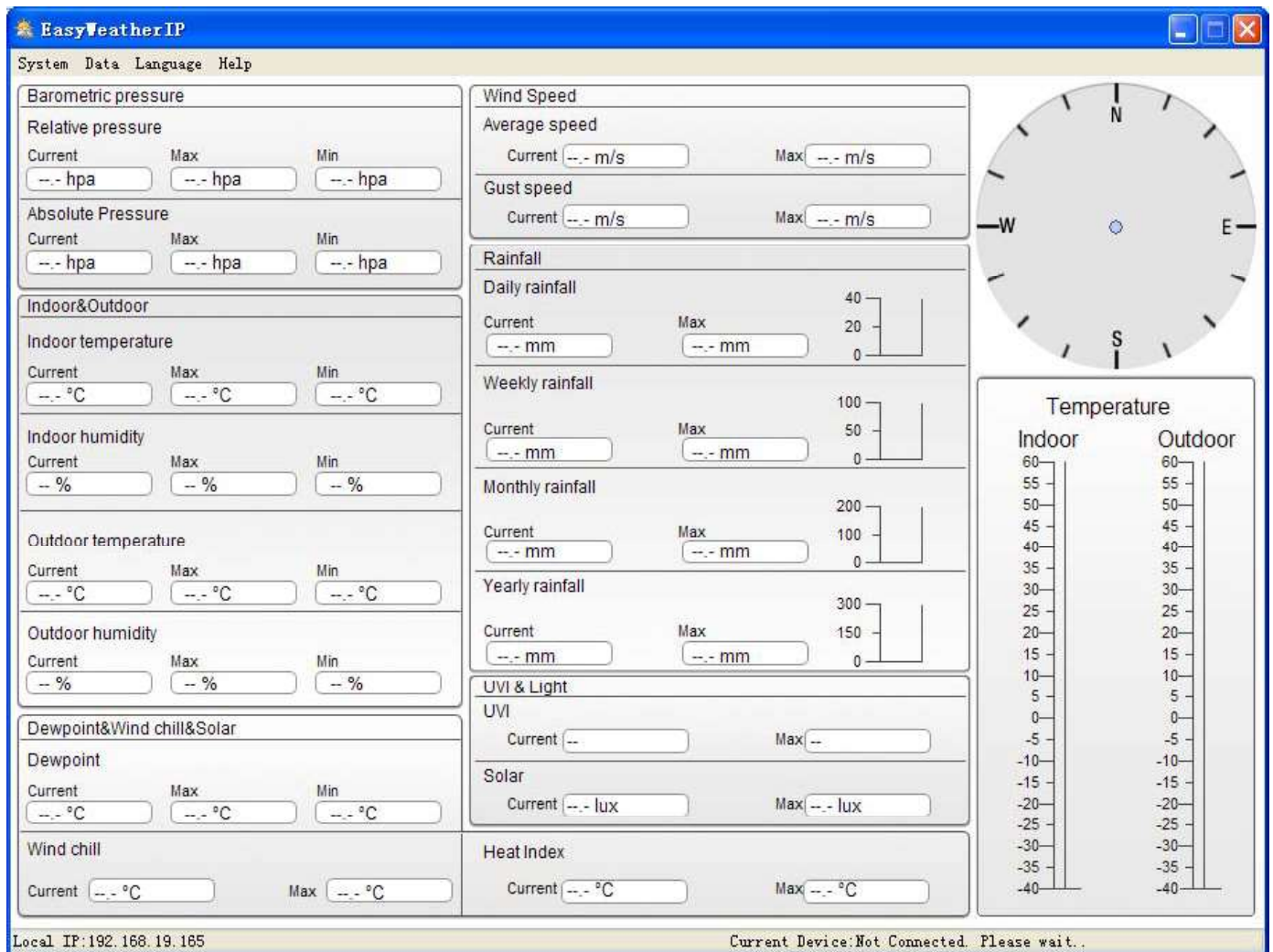
Note: The graphic function needs the software to be installed under the administrator account. If it is installed under limited user accounts, the graphic function of the software might not be working correctly.

4.0 Basic Settings of the “EasyWeatherIP” Software on Windows OS

After the “EasyWeatherIP Setup.exe” program has been started, the following main window will appear on the PC screen:



Click "OK" to enter following interface:

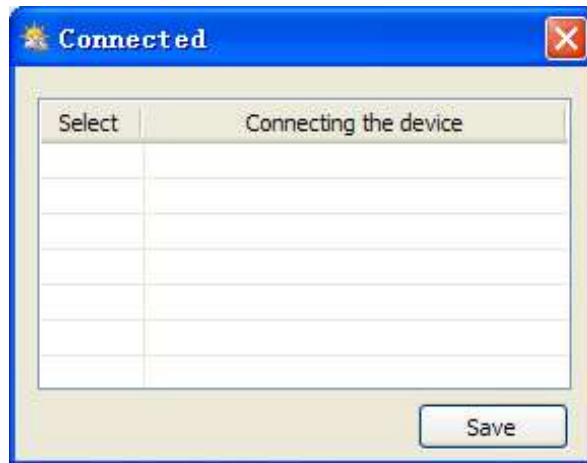


All the settings from the base unit is mirrored into the PC software, so once you have done your setting on the base unit, then you don't need to make any setting changes on the PC software. However you can still easily make any setting changes you wanted from the PC and download the changes into the base station(the setting change will be refreshed when next full minute arrives on the base station).

Tool Bar: The tool bar at the top of the screen has 4 options; System, Data,Language and Help.

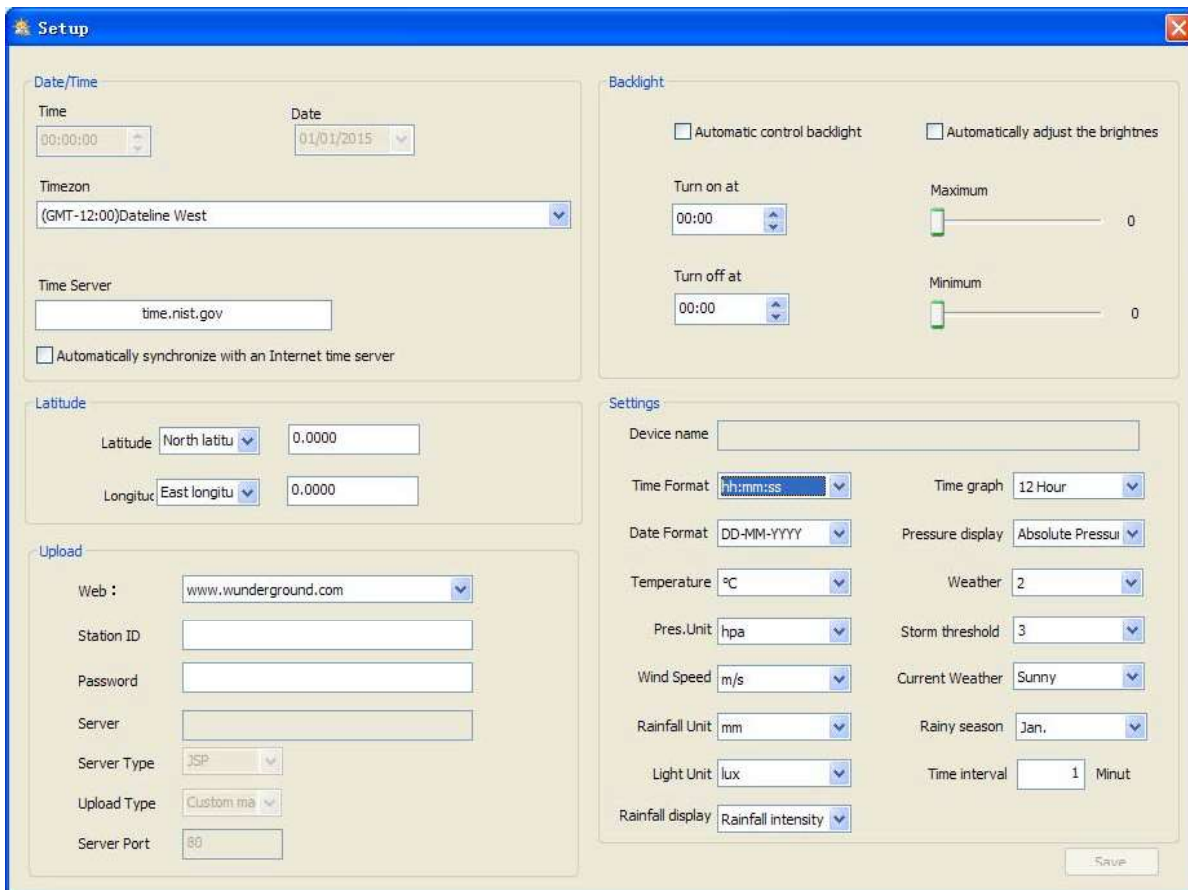
4.1 System option

4.1.1 Click System button, enters the Device connect



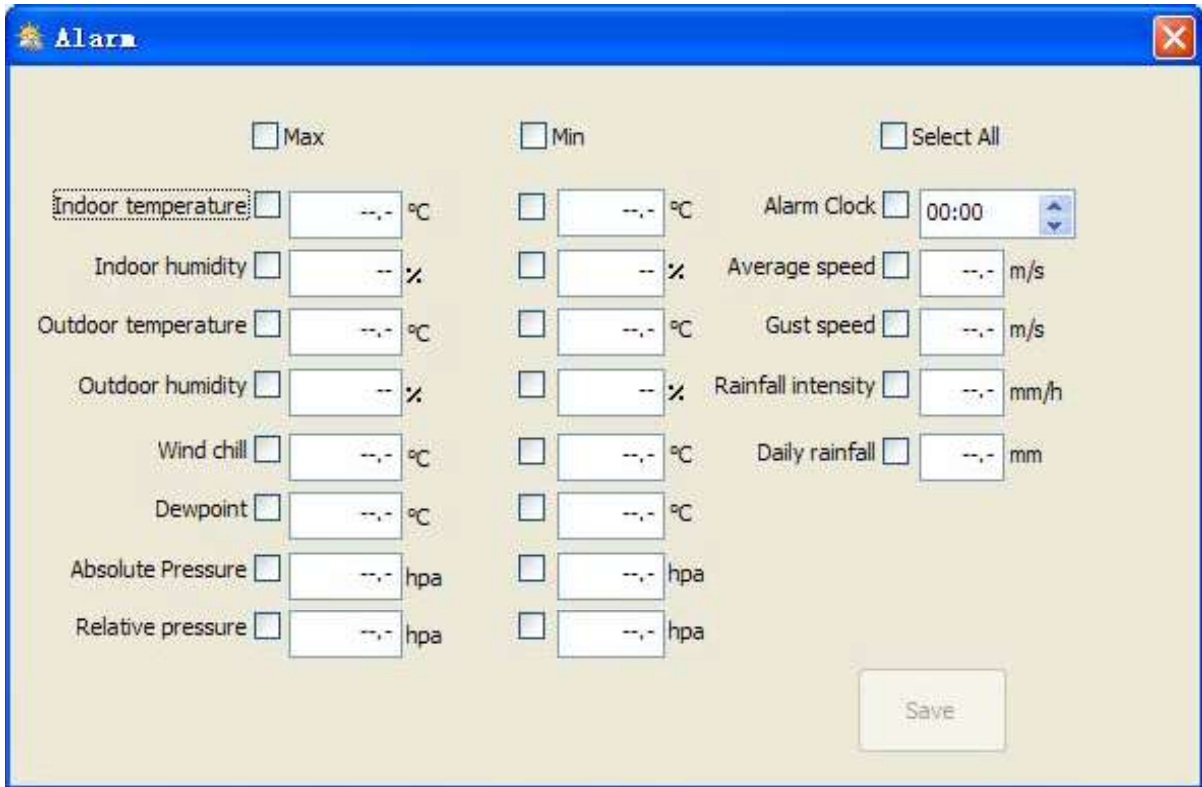
This section is used to choose the device IP. Once you made your choice, press Save to make the setting effective.

4.1.2 Click Setup button, enters the Setup menu



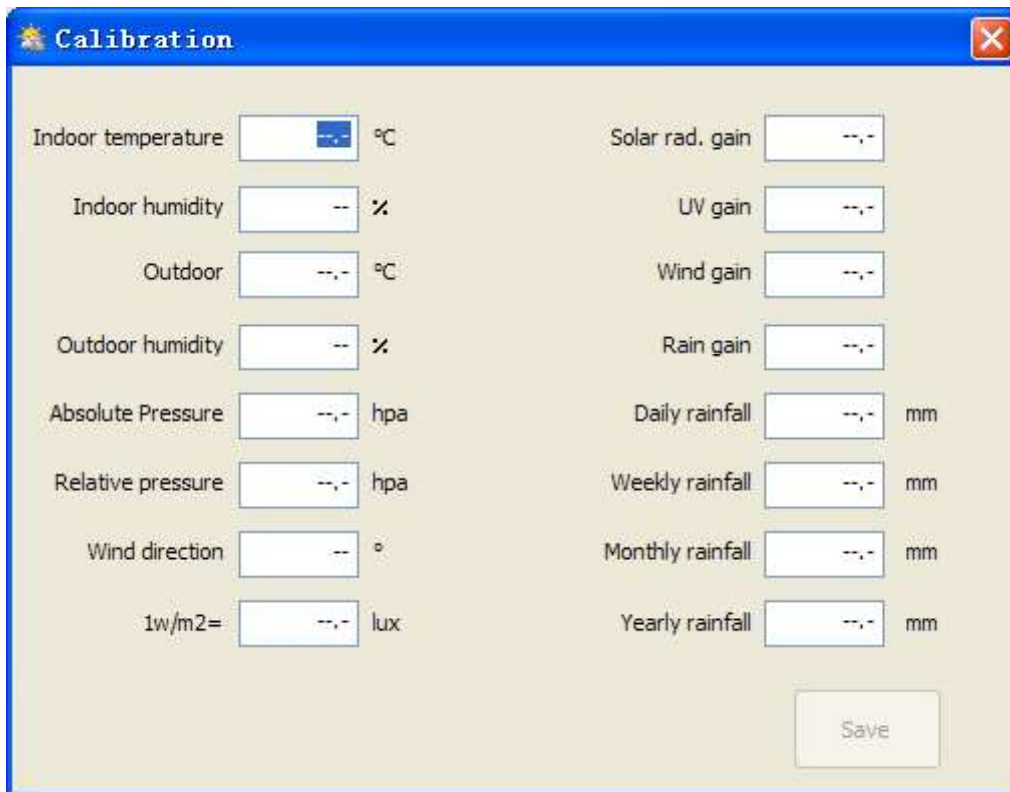
This section is used to set up PC software display and Uploading web server. Once you made your choice, press Save to make the setting effective.

4.1.3 Click Alarm button, enters the Alarm menu



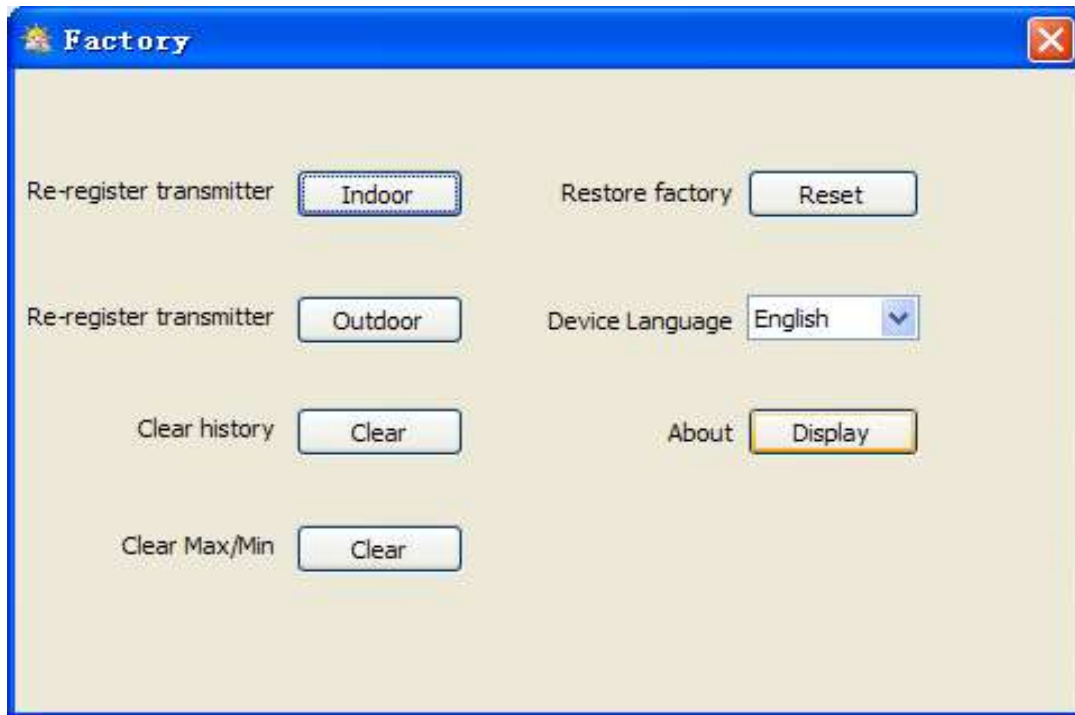
This section is used to set the desired time, high or low alarm value for the base unit, as well as able or disable the corresponding alarm function. Once you made your choice, choose Save to make the setting effective. If you don't want to make any change, just press Cancel and exit without change.

4.1.4 Click Calibration button, enters the Calibration menu



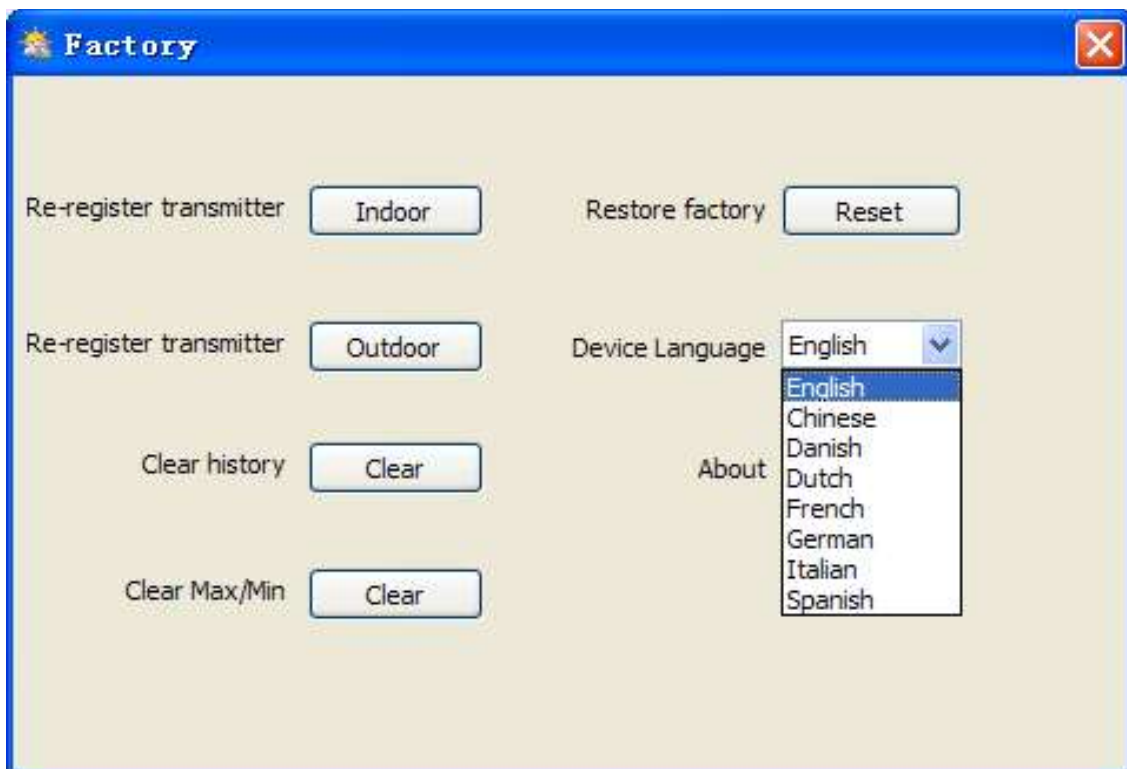
This section is used to set the calibration value. Once you made your choice, choose Save to make the setting effective.

4.1.5 Click Factory button, enters the Factory menu



This section is used to restore factory. Once you made your choice, all the set and record will be deleted.

4.1.5.1 Click Device Language to choose the display language

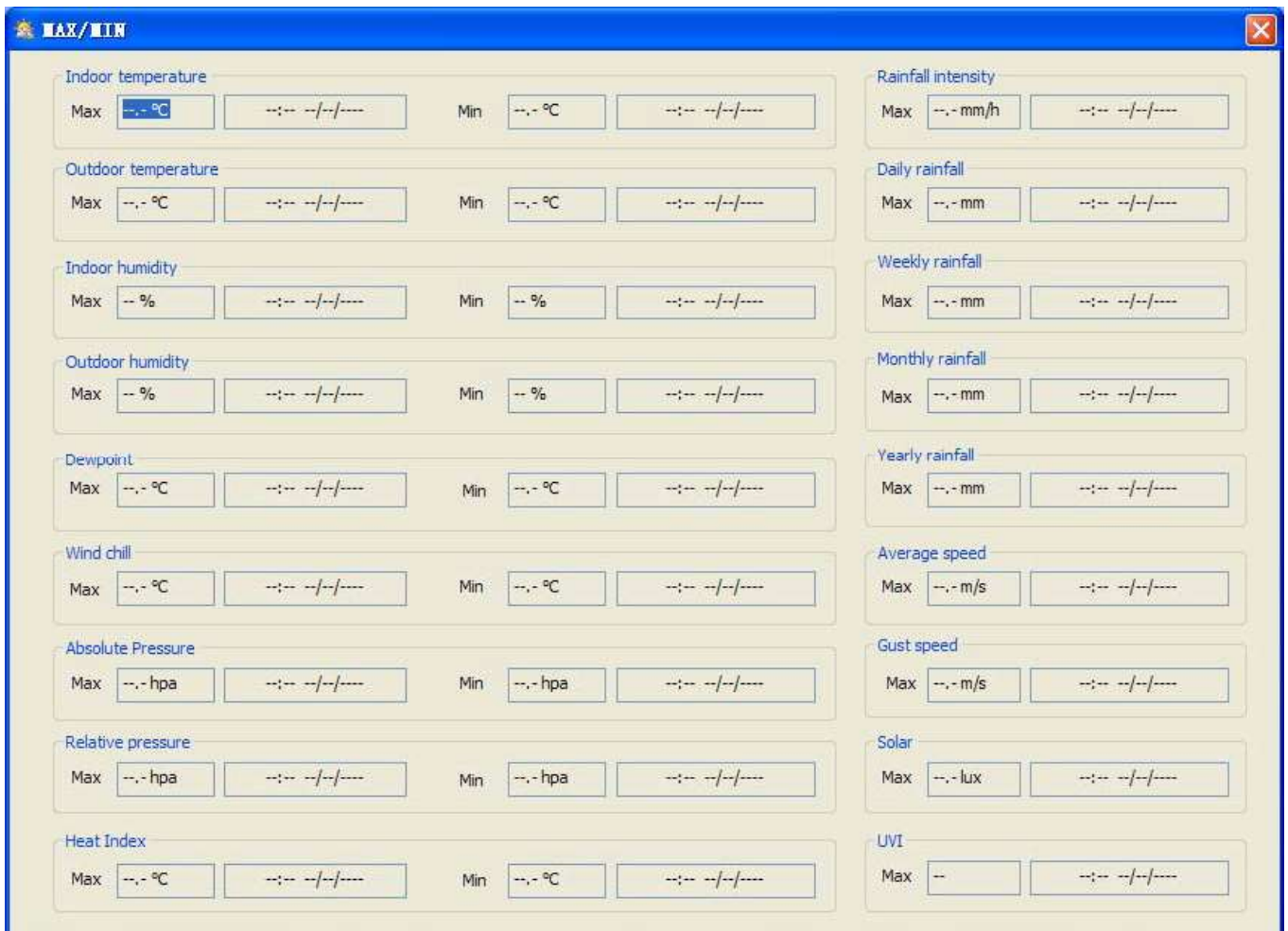


4.1.5.2 Click Display button to view the details of the device



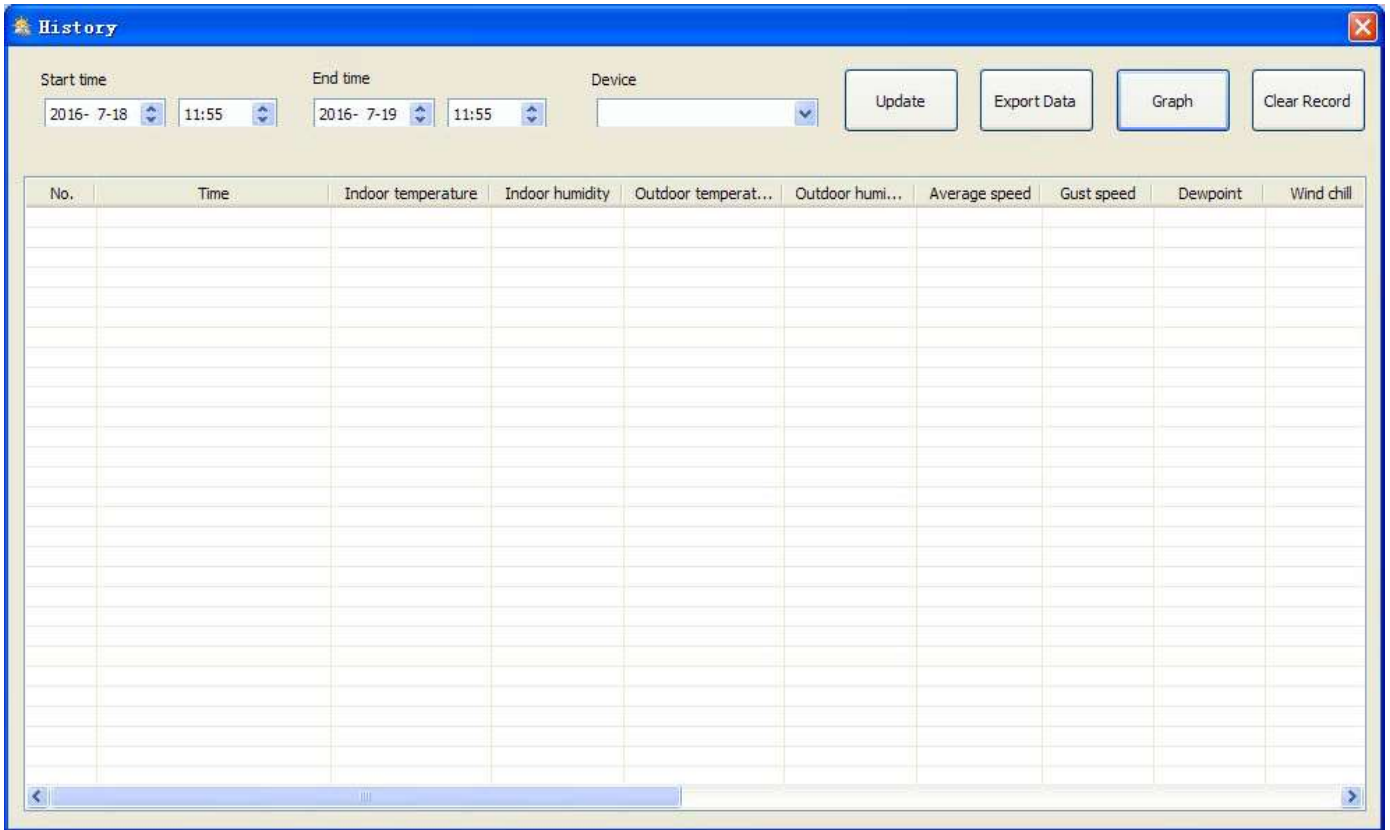
4.2 Data option

4.2.1 Click Max/Min button, enters the Max/Min menu



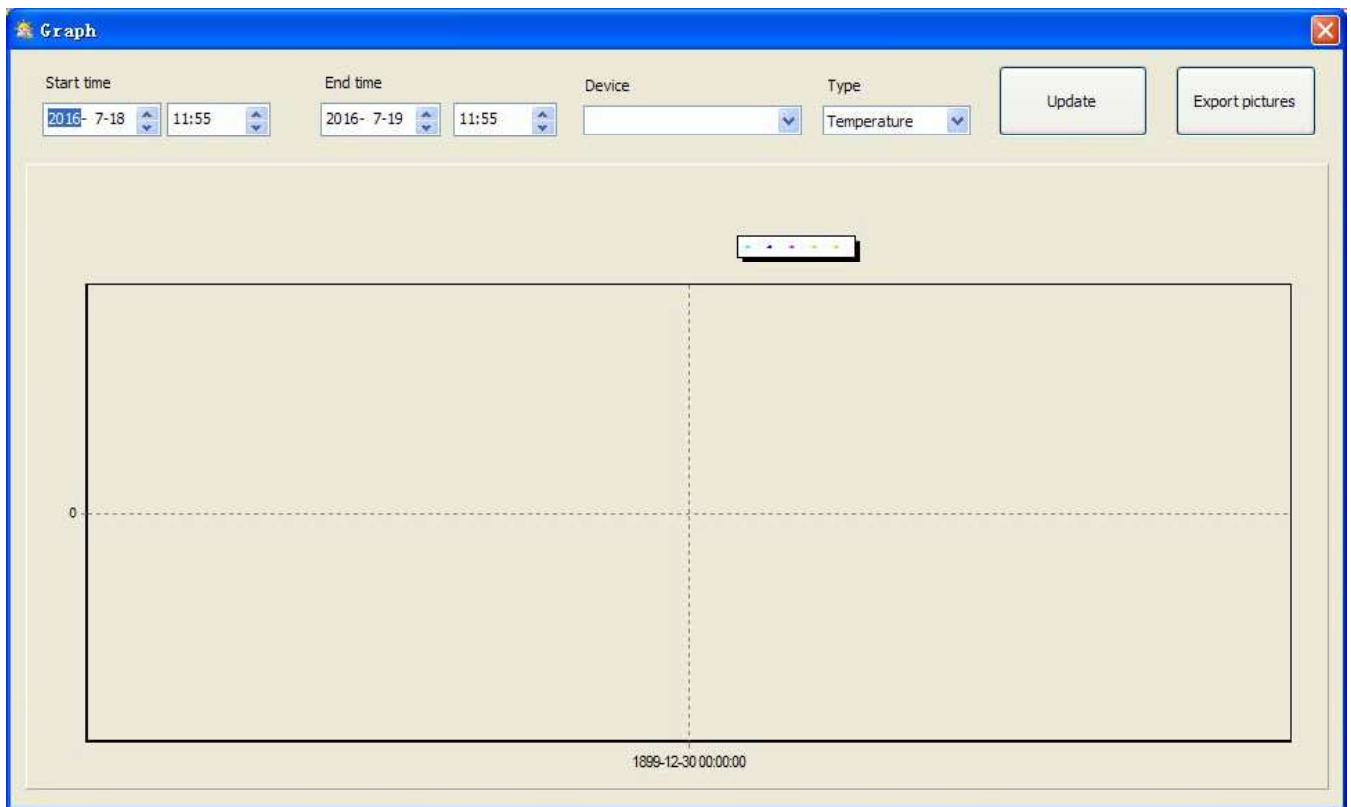
This section is used to display the recorded min and max value recorded with time stamp.

4.2.2 Click History data button, enters the History menu



This section is used to display recorded history data in a spread sheet. If you wanted to see all history data in a desired time period, choose the time duration and press **Update** to reload the history data. With the **Export Data** button, you can export the selected history data into excel format file for other application purpose.

Click **Graph** button, you can see the history data plotted in graph format for easier observation. If you want to see more details, just use your mouse to select the area you wanted and the display will be automatically updated in more detailed scale. With the **Export Pictures** button, you can export the selected graph into jpeg format file. You can change the Y axel by scrolling the mouse up and down roller.



When memory on base station is full, press “**Clear Record**” button to refresh the memory space on the base station (remember to upload all data before pressing this button).
 If you wanted to start a new weather history record, press “**Clear Record**” button to clear up the data base, all history weather data will be deleted.

4.3 Language option



What to do if graph function is not working

This is the most encountered problem with this software. To make the graph function working properly, please check the following step:

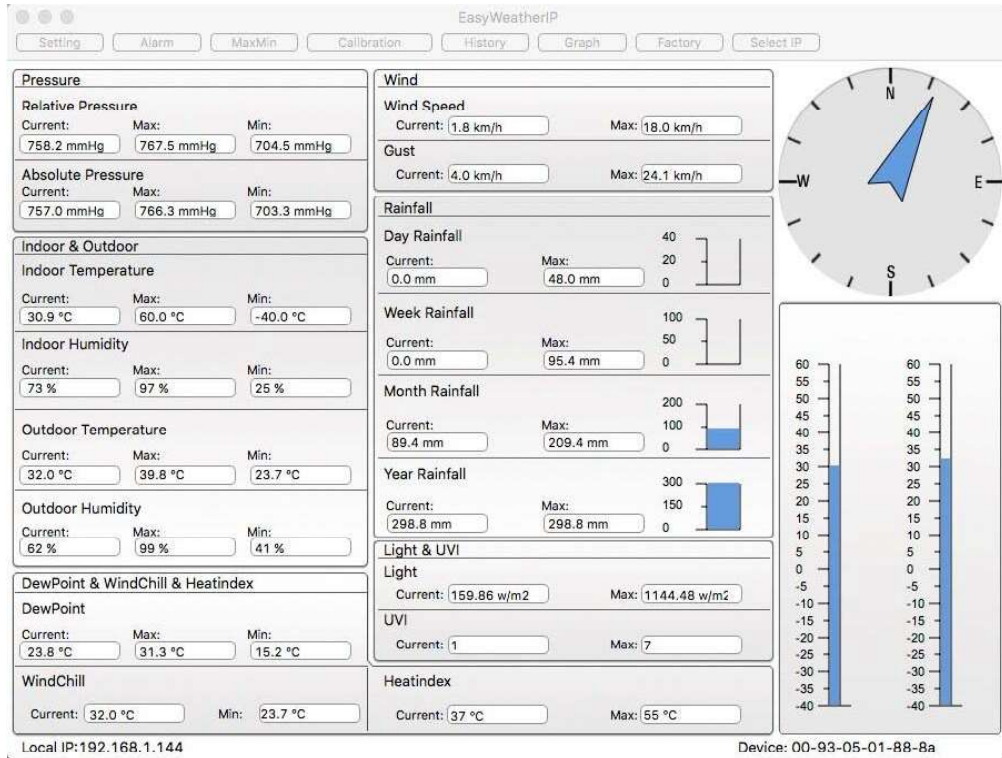
- 1, find the folder where the “EasyWeahter.exe” file is located
2. Create a file name “reg_graph.bat” file with wordpad or notepad editor program
3. Type “regsvr32 easyweather.ocx” and save the reg_graph.bat file
4. Double click “reg_graph.bat” file and it should register the graphic driver again. If successful, then the following window will be displayed:

4.4 Help option

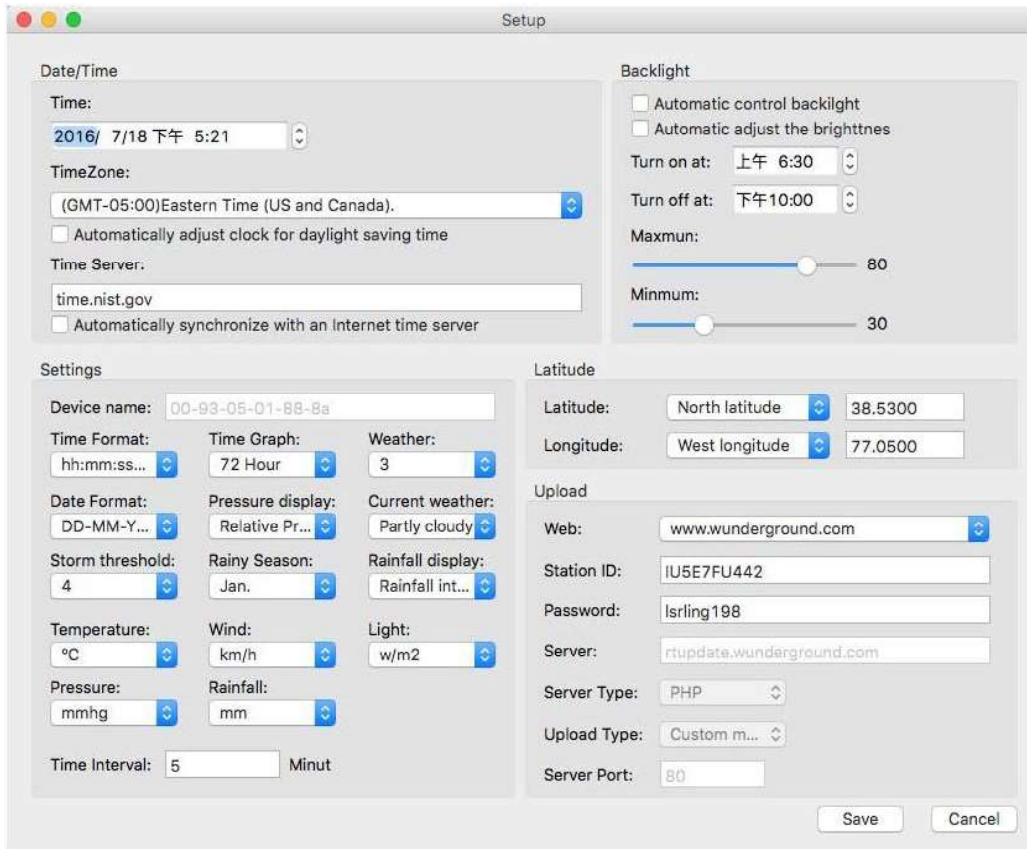
Click About EasyWeatherIP button, enters the About menu

5.0 Basic Settings of the “EasyWeatherIP” Software on MAC OS

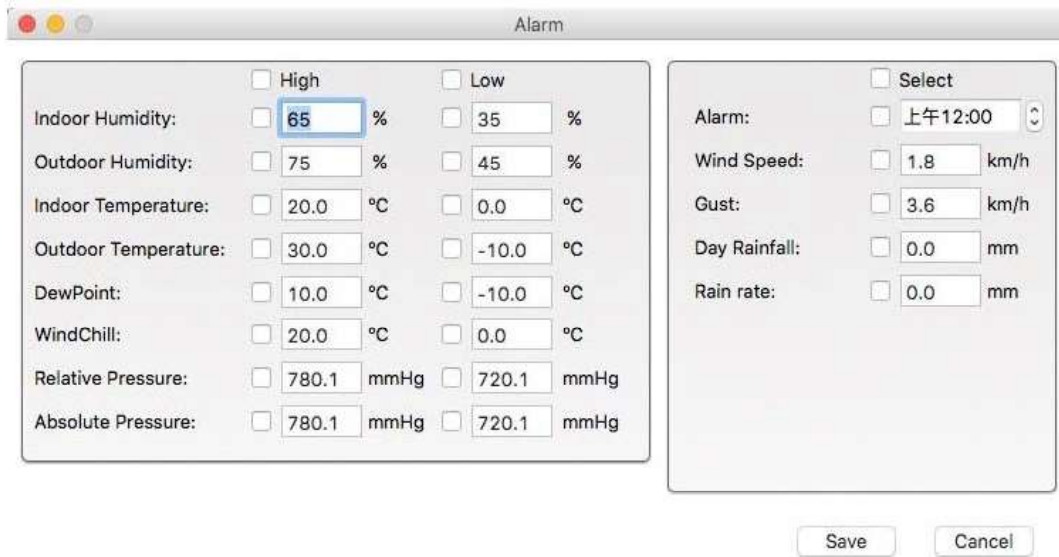
After the “EasyWeatherIP Setup.exe” program has been started, the following main window will appear on the PC screen:



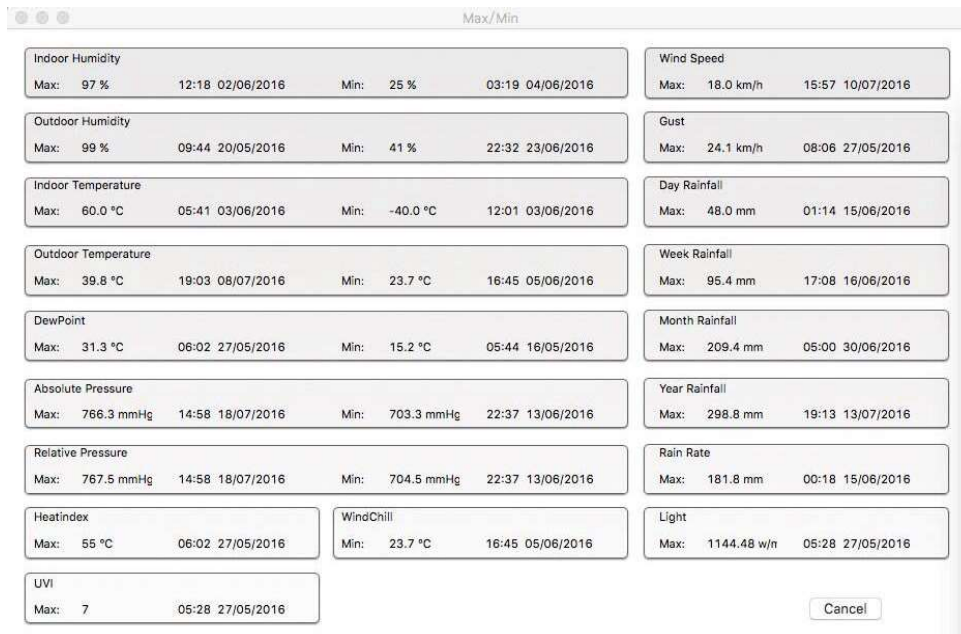
5.0.1 Click Setup button, enters the Setup menu



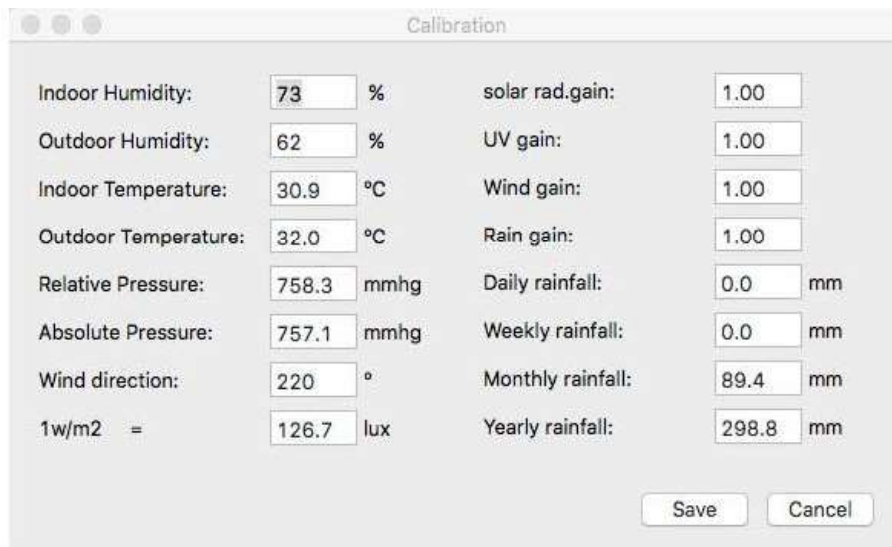
5.0.2 Click Alarm button, enters the Alarm menu



5.0.3 Click Max/Min button, enters the Max/Min menu



5.0.4 Click Calibration button, enters the Calibration menu



5.0.5 Click History button, enters the History menu

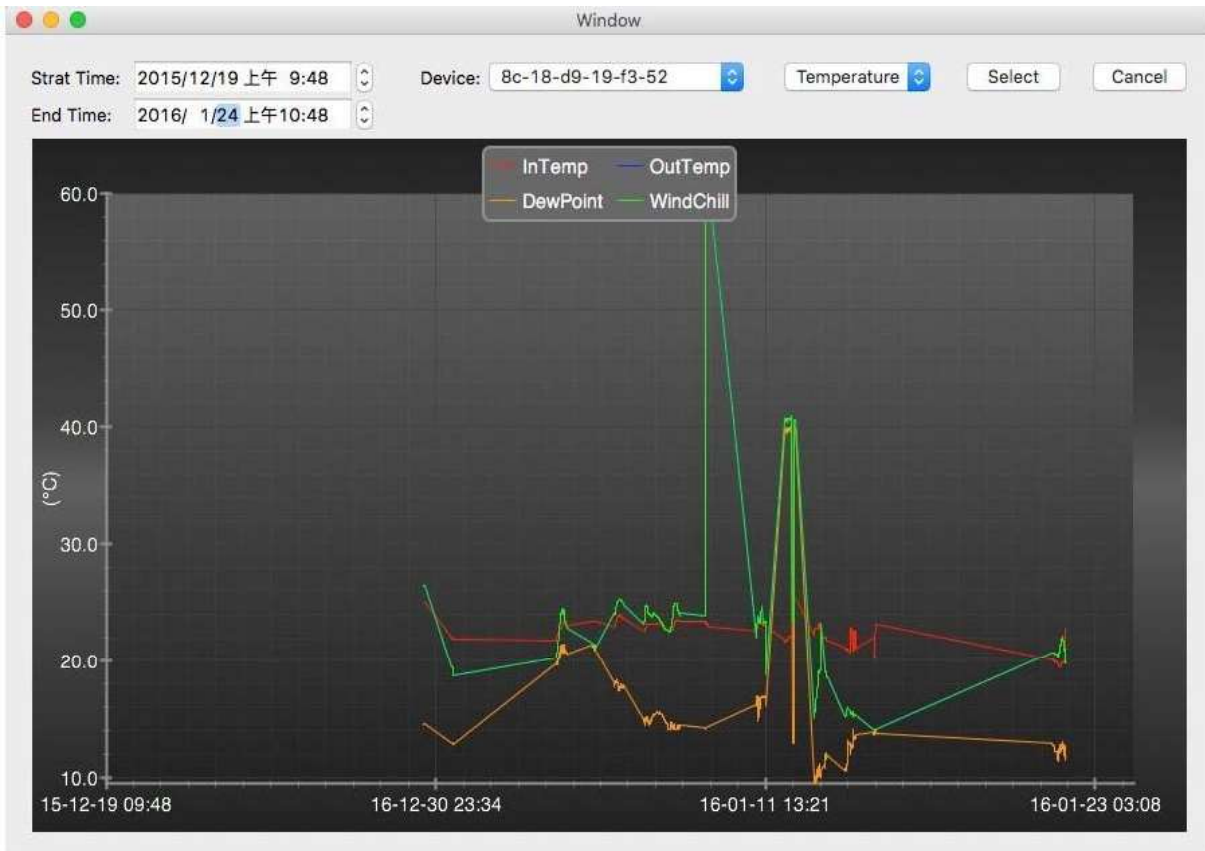
History

Strat Time: 2013/ 7/19 上午 9:42 Device: 8c-18-d9-19-f3-52 Select Export Clean History Cancel

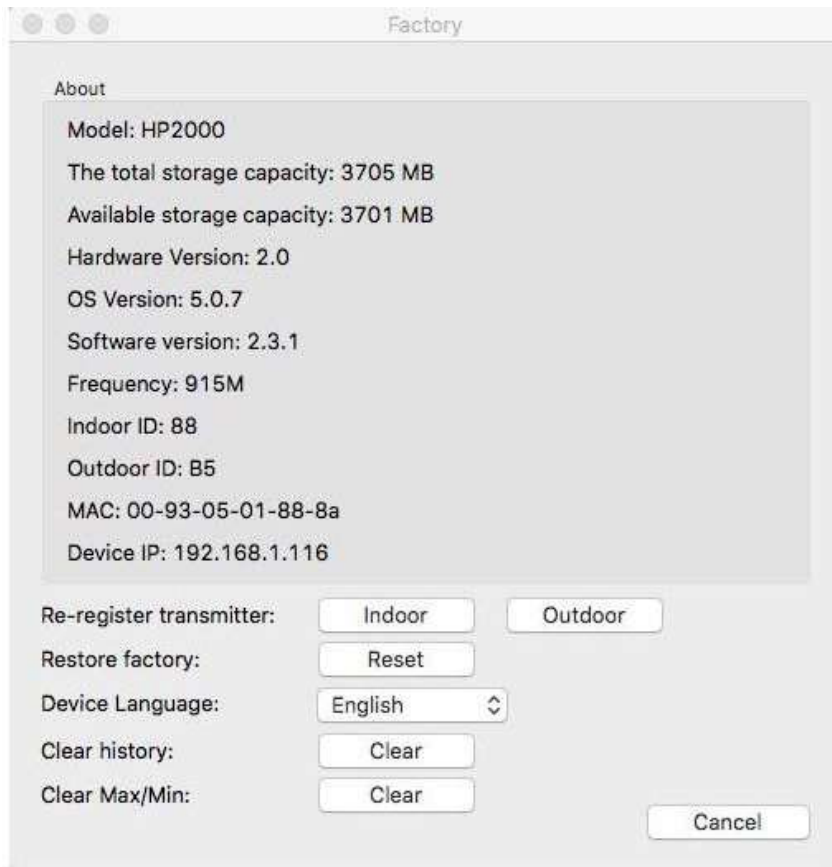
End Time: 2016/ 7/19 上午10:42

NO.	Time	InTemp	InHumi	OutTemp	OutHumi	RelPress...	AbsPress...	DewPoint	WindChill	Wind	Gust	WindDire...	Daily Rai
1813	2016-01-22 02:16	22.8	67	19.8	60	757.30	758.80	11.8	19.8	0.0	0.0	246	13.00
1814	2016-01-22 02:17	22.8	67	19.8	60	757.20	758.70	11.8	19.8	0.0	0.0	246	13.00
1815	2016-01-22 02:18	22.8	67	19.8	60	757.40	758.90	11.8	19.8	0.0	0.0	246	13.00
1816	2016-01-22 02:19	22.8	67	19.8	60	757.40	758.90	11.8	19.8	0.0	0.0	246	13.00
1817	2016-01-22 02:20	22.8	67	19.8	60	757.20	758.70	11.8	19.8	0.0	0.0	246	13.00
1818	2016-01-22 02:21	22.8	67	19.8	60	757.30	758.80	11.8	19.8	0.0	0.0	246	13.00
1819	2016-01-22 02:22	22.8	67	19.8	60	757.30	758.80	11.8	19.8	0.0	0.0	246	13.00
1820	2016-01-22 02:23	22.8	67	19.8	60	757.30	758.80	11.8	19.8	0.0	0.0	246	13.00
1821	2016-01-22 02:24	22.8	67	19.8	60	757.40	758.90	11.8	19.8	0.0	0.0	246	13.00
1822	2016-01-22 02:25	22.8	67	19.8	60	757.30	758.80	11.8	19.8	0.0	0.0	246	13.00
1823	2016-01-22 02:26	22.8	67	19.8	60	757.30	758.80	11.8	19.8	0.0	0.0	246	13.00
1824	2016-01-22 02:27	22.8	67	19.8	60	757.40	758.90	11.8	19.8	0.0	0.0	246	13.00
1825	2016-01-22 02:28	22.8	67	19.8	60	757.50	759.00	11.8	19.8	0.0	0.0	246	13.00
1826	2016-01-22 02:29	22.8	67	19.8	60	757.50	759.00	11.8	19.8	0.0	0.0	246	13.00
1827	2016-01-22 02:30	22.8	67	19.8	60	757.50	759.00	11.8	19.8	0.0	0.0	246	13.00
1828	2016-01-22 02:31	22.8	67	19.8	60	757.40	758.90	11.8	19.8	0.0	0.0	246	13.00
1829	2016-01-22 02:32	22.8	67	19.8	60	757.40	758.90	11.8	19.8	0.0	0.0	246	13.00
1830	2016-01-22 02:33	22.8	67	19.8	60	757.40	758.90	11.8	19.8	0.0	0.0	246	13.00
1831	2016-01-22 02:34	22.8	67	19.8	60	757.30	758.80	11.8	19.8	0.0	0.0	246	13.00
1832	2016-01-22 02:35	22.8	67	19.8	60	757.30	758.80	11.8	19.8	0.0	0.0	246	13.00
1833	2016-01-22 02:36	22.8	67	19.8	60	757.30	758.80	11.8	19.8	0.0	0.0	246	13.00
1834	2016-01-22 02:37	22.8	67	19.8	60	757.20	758.70	11.8	19.8	0.0	0.0	246	13.00
1835	2016-01-22 02:38	22.8	67	19.8	60	757.30	758.80	11.8	19.8	0.0	0.0	246	13.00
1836	2016-01-22 02:39	22.8	67	19.8	60	757.30	758.80	11.8	19.8	0.0	0.0	246	13.00
1837	2016-01-22 02:40	22.8	67	19.8	60	757.30	758.80	11.8	19.8	0.0	0.0	246	13.00
1838	2016-01-22 02:41	22.8	67	19.8	60	757.30	758.80	11.8	19.8	0.0	0.0	246	13.00
1839	2016-01-22 02:42	22.8	67	19.8	60	757.30	758.30	11.8	19.8	0.0	0.0	246	0.00
1840	2016-01-22 02:43	22.8	67	19.8	60	757.20	758.20	11.8	19.8	0.0	0.0	246	0.00

5.0.6 Click Windows button, enters the Graph menu



5.0.7 Click Factory button, enters Factory menu



5.0.8 Click Select IP button, enters Device ID and Local IP menu



Special Notes about time synchronization between PC and sub-station:

The PC software obtained its own time scale through the time interval marker from the base station history data, and the PC software automatically synchronizes the weather data with a time stamp calculated. Thus the history data file can have different time when the PC time and base station time is not same. In order to make the time scale correct, remember to set the PC time and base station time same, and further to this, no weather data is allowed to be missed or over-written. If history weather memory on the base station is cleared by manual setting, then the history weather data since last uploading is lost permanently.

If there is a reset happened for the rain fall on the base station, then there will be rain fall value discrepancy between PC and base station.

Legal Notes

- We reserve the right to delete or change any image whether or not purposely uploaded onto the server by a user of the HP2000 and the EasyWeatherIP software products.
- The EasyWeather software products are protected by copyright laws and international copyright treaties as well as other intellectual property laws and treaties.
- You may not copy the printed materials accompanying the products.